

Tourist Information

Tourist Information		
Fukuoka Prefectural Tourism Association	TEL 092-645-0019	
Fukuoka Prefecture Commerce Department, Tourism Bureau, Tourism Promotion Division	TEL 092-643-3429	
Fukuoka Prefecture Tourism & Hot Spring Association	TEL 092-645-0019	
Fukuoka Prefectural Tourist Souvenirs Association	TEL 092-645-0019	
Fukuoka Prefecture Products Promotion Association	TEL 092-651-7288	
Fukuoka Prefecture Tokyo Office	TEL 03-3261-9861	
Fukuoka Prefecture Nagoya Office	TEL 052-262-6938	
Fukuoka Prefecture Osaka Office	TEL 06-6341-3627	
ACROS Fukuoka Cultural Information Center	TEL 092-725-9100	
Hakata Port International Terminal Information Center	TEL 092-282-4871	
Asakura Tourism Association	TEL 0946-24-6758	
Ashiya Town Tourist Information Center	TEL 093-221-1001	
Iizuka Tourism Association	TEL 0948-22-3511	
Itoshima City Tourism Association	TEL 092-322-2098	
Ukiha Tourism Future Development Public Corporation	TEL 0943-76-3980	
Okawa Tourism Association (Okawa TERRAZZA)	TEL 0944-87-0923	
Omuta Tourism Association	TEL 0944-52-2212	
Okagaki Town Tourism Association	TEL 093-281-5050	
Ogori City Tourism Association	TEL 0942-72-4008	
Kama City Tourism and Urban Development Association	TEL 0948-43-3680	
Kawasaki Town Tourism Association	TEL 0947-73-3838	
Kawara Town Tourism Association	TEL 0947-85-8035	
Kanda Town Tourism Association	TEL 093-434-5560	
Kitakyushu Convention & Visitors Association	TEL 093-541-4151	
Kurume Bureau of Tourism and International Exchange	TEL 0942-31-1717	
Kurogi Town Tourism Association	TEL 0943-42-9190	
Koga City Tourism Association	TEL 092-940-2300	
Sasaguri Town Tourism Association	TEL 092-947-1880	
Shingu Town Hospitality Association	TEL 092-981-3470	
Tagawa Regional Tourism Association	TEL 0947-45-0700	
Dazaifu Tourist Association	TEL 092-925-1899	
Chikugo City Tourism Association	TEL 0942-53-4229	
Chikushino City Tourism Association	TEL 092-922-2421	
Chikujou Town Tourism Association (NPO)	TEL 0930-31-0306	
Nogata City Tourism & Product Promotion Association	TEL 0949-28-8135	
Hikosan Tourism & Welfare Association	TEL 0947-85-0454	
Hirokawa Town Tourism Association	TEL 0943-32-5555	
Fukuoka Convention & Visitors Bureau	TEL 092-733-5050	
Fukuoka Tourist Association	TEL 0940-42-9988	
Hikarinomichi DMO Fukutsu	TEL 0940-62-5790	
Miyako Tourism & Town Development Association	TEL 0930-33-5771	
Miyama City Tourism Association	TEL 0944-63-3955	
Miyawaka City Tourism Association	TEL 0949-55-9090	
Munakata Tourism Association	TEL 0940-62-3922	
YANAGAWA TOURISM BUREAU	TEL 0944-73-2145	
Yame Tourist Information Center	TEL 0943-22-6644	
Yukuhashi City Tourism Association	TEL 0930-25-0086	
Buzen City Tourism Association	TEL 0979-53-6660	
Onojo City Revitalization Council	TEL 092-558-1303	

Transportation Information

Air Routes		
Japan Airlines (JAL) / Japan Transocean Air (JTA)	TEL 0570-025-071	
All Nippon Airways (ANA)	TEL 0570-029-222	
Skymark Airlines (SKY)	TEL 0570-039-283	
Fuji Dream Airlines (FDA)	TEL 0570-55-0489	
Star Flyer (SFJ)	TEL 0570-07-3200	
Jetstar Japan (JP)	TEL 0570-550-538	
Peach Aviation (APJ)	TEL 0570-001-292	
Amakusa Airlines (AMX)	TEL 0969-34-1515	
Oriental Air Bridge (ORC)	TEL 0570-064-380	
Railways, Buses & Taxis		
JR Sanyo Shinkansen: JR West	TEL 0570-00-2486	
Kyushu Shinkansen & local lines: JR Kyushu	TEL 0570-04-1717	
Subway: Tenjin Customer Service Center	TEL 092-734-7800	
Nishitetsu Customer Service Center	TEL 050-3616-2150	
Showa Bus: Public Transport Division	TEL 0955-74-1114	
Kitakyushu Monorail	TEL 093-961-0101	
Kitakyushu City Bus: Wakamatsu Office	TEL 093-771-2765	
Heisei Chikuho Railway	TEL 0947-22-1000	
Amagi Railway	TEL 0946-23-1111	
Amagi Kanko Bus	TEL 0946-22-1513	
Horikawa Bus: Yame Office	TEL 0943-23-6128	
Fukuoka Prefecture Taxi Association	TEL 092-474-8340	
Fukuoka City Taxi Association	TEL 092-434-5100	
Sarakurayama Cable Car	TEL 093-671-4761	
Sea Routes		
Hakata Port International Terminal	TEL 092-282-4871	
Ocean Tokyo Ferry Kitakyushu Terminal	TEL 093-481-7711	
Meimon Taiyo Ferry	TEL 093-481-2311	
Hankyu Ferry	TEL 0570-01-8989	
Tokyo Kyushu Kisen Tokyo Reservation Center	TEL 03-5860-9488	
Kyushu Yusen	TEL 092-281-0831	
Kanmon Kisen (Mojiko-Karato)	TEL 093-331-0222	
Kitakyushu Municipal Ferry - Wakato Route (Wakamatsu-Tobata)	TEL 093-861-0961	
Fukuoka City Ferry (Hakata - Shikanoshima, Uminonakamichi)	TEL 092-291-1085	
Fukuoka City Ferry (Nokonoshima-Meinhama)	TEL 092-891-6327	
Uminaka Line (Marizon, Hakata Pier-Uminonakamichi)	TEL 092-845-1405	
Munakata City Ferry (Konominato-Oshima)	TEL 0940-72-2535	
Cruising		
Hakata Bay Cruise	TEL 080-5215-6555	
Kitakyushu Factory Night View Cruise (Kanmon Kisen)	TEL 093-331-0222	
Road Information		
Japan Road Traffic Information Center (Fukuoka Center)	TEL 050-3369-6640	
Fukuoka Urban Expressway Information	TEL 050-3369-6680	
Fukuoka Expressway Highway Telephone	TEL 092-643-1300	
Kitakyushu Urban Expressway Information	TEL 050-3369-6688	
Kitakyushu Expressway Highway Telephone	TEL 093-931-1400	



[Contact Information]

Fukuoka Prefecture Commerce Department,
Tourism Bureau, Tourism Promotion Division
7-7 Higashi Koen, Hakata Ward, Fukuoka City, Fukuoka 812-8577, Japan
TEL 092-643-3429

Fukuoka Prefectural Tourism Association
(Visit Fukuoka)
7-7 Higashi Koen, Hakata Ward, Fukuoka City, Fukuoka 812-8577, Japan
TEL 092-645-0019

<https://www.crossroadfukuoka.jp/en>

Note: Information is compiled from the Fukuoka City and Kitakyushu City school excursion pamphlets, the Fukuoka Prefecture Hot Springs Association, Visit Fukuoka, and city/town tourism offices.

Published in March 2026

Fukuoka School Trip Guide

福岡県 修学旅行ガイド

FUKUOKA ONE HEALTH

Many enjoyable learning themes

ONE HEALTH

eco

Future

experience

SDGs

history

industry

The Gateway to Kyushu

Inspiring Experiences in Fukuoka



On school trips to Fukuoka, students can explore a wide range of learning opportunities across history, industry, and culture. Discover the region's ancient trade connections with Asia, learn about the iron and coal industries that laid the foundations of modern Japan, and gain insights into emerging growth sectors and environmental initiatives shaping the future. Engage in peace education that preserves the memory of wartime tragedies. As the gateway to Kyushu, welcoming around ten million tourists each year, Fukuoka Prefecture offers unforgettable, one-of-a-kind experiences that leave a lasting impression.

8 Learning Themes Unique to Fukuoka Prefecture

1 Learning Theme One Health P05-06



Following the "Fukuoka Declaration" adopted in Kitakyushu City in 2016, Fukuoka Prefecture has been actively advancing the One Health approach and has established Japan's first-ever "Basic Ordinance for the Promotion of One Health". Since then, the prefecture has been steadily implementing One Health initiatives, focusing on six core pillars to create a healthier and more sustainable community.

2 Learning Theme SDGs P07-10



Under the new curriculum guidelines, fully implemented in 2020, education in Japan emphasizes "active, interactive, and deep learning", focusing on helping students identify challenges and explore solutions. Fukuoka Prefecture offers a wide range of facilities where students can engage with the SDGs, including six cities designated as "Future Cities for the SDGs", providing ample opportunities for hands-on learning about sustainable development.

3 Learning Theme Growth Industries P17-18



Fukuoka Prefecture is home to a wide variety of companies, particularly in the automobile and robotics industries, and is also actively engaged in environmental initiatives and research. As one of Asia's leading industrial hubs, the region continues to advance confidently toward the future.

4 Learning Theme Peace Studies P19



In Chikuzen Town, where the Peace Memorial Museum now stands, there was once the Tachiarai Airfield, known as the largest in East Asia. During World War II, it served as a relay base for kamikaze units, from which many young pilots took off.

Exploring the Streets of Fukuoka P23-24



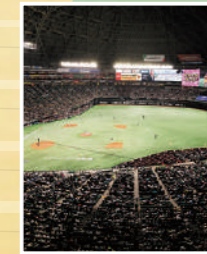
In Fukuoka City, the largest city in Kyushu, you can immerse yourself in the latest cultural trends, or experience the romantic charm of Mojiko, a town rich in history. From past to present, Fukuoka has long been the gateway to Asia—feel the vibrant energy of Fukuoka that continues to thrive today!

Experience Nature! P25-26



In Fukuoka Prefecture, just a short trip from the city center takes you to numerous spots where you can connect with nature, from the mountains and the sea, to other scenic landscapes. The chance to experience both urban life and nature is a charm that is uniquely Fukuoka.

Learning in the City! P27-28



In Fukuoka Prefecture, home to professional baseball and J-League teams, watching a game at the stadium is a classic experience. For those interested in arts and culture, the modern theaters and museums are also highly recommended.

Table of Contents

Kitakyushu SDGs Study & Discovery Program	29
Fukuoka School Trip Destinations	30
Farm Stay Information in Fukuoka	31
Sample Itinerary	32
Major Accommodations in Fukuoka Prefecture	33
Major Lunch Spots in Fukuoka Prefecture	34
Tourist Information & Transportation Guide	Back Cover

Lots of Fun Themes to Explore!

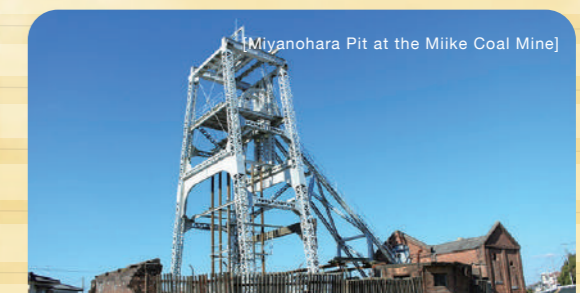
To make school trips even more memorable, eight learning themes have been developed in Fukuoka Prefecture. Each theme is supported by numerous facilities and historic sites that welcome group visits, allowing students to engage in focused, theme-based learning experiences.

5 Learning Theme Cultural Exchange with Asia P11-12



Fukuoka Prefecture has long served as a hub for trade with the Chinese mainland and the Korean Peninsula, with historic sites such as the Dazaifu Government Office and Korokan Guest House. The region is also home to numerous historically significant sites, including the "Sacred Island of Okinoshima and Associated Heritage Sites in Munakata", which has been recognized as a UNESCO World Heritage Site.

6 Learning Theme Modern Industries P13-16



During the Meiji era, Omuta City in southern Fukuoka and the Chikuhō region in the central part of the prefecture grew into major coal-producing areas. In Kitakyushu City, the government-operated Yahata Works opened, using coal as fuel and becoming the heart of Japan's steel industry. Across Fukuoka, numerous industrial heritage sites that played a key role in Japan's modernization still remain, and many facilities allow visitors to explore and learn about this industrial history.

7 Learning Theme Traditional Culture P20



Explore Hakata, a bustling commercial city, and Kurume and Yame, where traditional industries still thrive. Experience Japan's renowned traditional festivals, including the Hakata Gion Yamakasa and Tobata Gion Oyama Yamakasa, both recognized as UNESCO Intangible Cultural Heritage.

8 Learning Theme Cutting-Edge Eco P21-22



Fukuoka Prefecture is strongly committed to environmental initiatives. From promoting eco-friendly energy and recycling programs to creating biotopes and other innovative projects, the region is striving to become a cutting-edge eco-friendly prefecture.

One Health is about considering the health of humans, animals, and the environment as one. Protecting it requires not just medical professionals, veterinarians, environmental experts and researchers, but all of us thinking and taking action together.

What is One Health?

The Concept of One Health

Today, our planet faces numerous challenges, including population growth and the deforestation, conversion of land for agriculture, and the resulting environmental degradation and climate change, including global warming. At the same time, human activities are reaching previously untouched natural areas, increasing contact between people and wildlife. These changes have contributed to a rise in zoonotic diseases—illnesses that can be transmitted between animals and humans, such as COVID-19.

To address these challenges, it is essential to adopt the One Health approach, which views human health, animal health, and environmental well-being as a single, interconnected whole. Protecting our own health requires that animals on Earth—and the planet itself—remain healthy as well. This approach is gaining recognition worldwide and is supported by international frameworks such as the G7 Summit and the 15th Conference of the Parties to the Convention on Biological Diversity (COP15).



FUKUOKA ONE HEALTH



Learn about the "Six Principles" of One Health.

01 Measures against Zoonotic Diseases

"Zoonotic diseases" are diseases that can be transmitted from animals to humans or from humans to animals. To prevent infection, gargle and wash your hands thoroughly with soap as soon as you get home. When entering grassy or bushy areas, wear long sleeves and long pants to avoid insect bites that may carry pathogens.



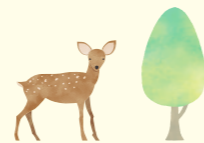
02 Measures against Drug-Resistant Bacteria Proper Use and Management of Drugs

We use medicines to treat bacterial infections, but recently, there has been a rise in drug-resistant bacteria, which make infections harder to treat. These bacteria can develop when medications are not taken correctly, such as taking the wrong amount or frequency. Always follow the prescribed dosage and schedule when taking medicines.



03 Environmental Conservation

Global warming and large-scale deforestation are changing the habitats of people and animals. Maintaining a healthy environment and appropriate separation of habitats helps maintain the health of people and animals. Let's do what we can to protect the environment.



04 Building a Society Where Humans and Animals Coexist

Animals (pets) such as dogs, cats, and birds bring joy to our daily lives, while search-and-rescue dogs or guide dogs, work to help people. At the same time, there are unfortunate cases where animals are mistreated or abandoned. If you decide to keep a pet, it is important to learn how to care for it properly.

05 Health Promotion

Everyone hopes to be healthy in both body and mind. Sports and physical activities help improve health and fitness, benefiting people of all ages, genders, and abilities. Let's aim for "health" by enjoying play and sports, staying healthy in mind and body.

06 Building a Better Relationship between the Environment, Humans and Animals

Our health depends on the food we eat, which is produced from in a healthy environment. By understanding where our food comes from and choosing fresh, locally grown produce, we can protect our local environment while also supporting the health of both people and animals.

1 Experience the Concept of One Health Shioji Prefectural Forest (One Health Forest)



Mt. Shioji is a historic satoyama (village forest) which is home to the remains of the ancient mountain fortress Ono Castle. It consists of four peaks, including Mt. Oki. Within its 342-hectare expanse lies the One Health Forest a lush woodland where visitors can enjoy forest bathing and the beauty of nature in every season. Here, you can not only refresh your mind and body in a tranquil natural setting, but also learn about the importance of biodiversity through encounters with native plants and animals. Relax and unwind on Mt. Shioji, where history and nature exist in perfect harmony.

One Health Experience Program (Proposed)

- An Overview of One Health
- Visit to the One Health Forest Museum
- One Health Forest Walk "Forest Bathing Experience Tour" (with an expert guide)
- Workshop

Reflect on, discuss, and present ideas about One Health
Program content can be tailored to your preferences.

Location	207 Oaza Shioji, Umi Town, Kasuya District	Fee	Please inquire
Duration	90 - 180 mins	Group Size	Please inquire
Group Size	Please inquire	Bus Parking	Up to 8 buses
Contact	050-9001-8912 (Fukuoka Prefecture School Trip Support Project Office)		



2 One Health Declaration Partner Fukuoka Kodomo Junior College



Opened in 2024 at Fukuoka Kodomo Junior College, "One Health Garden" is a place where visitors can learn about the value of life through interactions with rescued dogs and cats. By engaging with animals, visitors can experience the One Health philosophy promoted by Fukuoka Prefecture. Surrounded by lush nature, the campus serves as an oasis of animal welfare. At the nearby English Garden at Japan University of Economics, visitors can enjoy a picturesque view of seasonal blooms such as roses, and even graceful swans gliding across the lake.

One Health Experience Program (Proposed)

- One Health Presentation (basics of One Health and personal experiences)
- Workshop (opportunities to interact with junior college students)
- One Health Garden Training (hands-on training at a facility that cares for rescued dogs and cats)

Program content can be tailored to your preferences.

Location	3-11-25 Gojo, Dazaifu City	Duration	60 - 180 mins
Fee	Please inquire	Meal (Lunch)	Please inquire
Group Size	Please inquire	Bus Parking	Up to 4 buses
Contact	050-9001-8912 (Fukuoka Prefecture School Trip Support Project Office)		

Let's Experience and Reflect on "One Health."

3 The First One Health Education Facility Forest Adventure - SOEDA



Certified as a "Fukuoka Prefecture One Health Awareness Facility," Forest Adventure is an experiential facility where you can learn about One Health while having fun. Environmental learning in the well-maintained forest and biotope allows you to observe a variety of living creatures, including endangered species. Guided explanations by environmental experts and former zoo staff help participants understand the importance of natural ecosystems. Here, you can enjoy thrilling activities while gaining hands-on knowledge—making it a truly engaging destination. (Reservations are required for environmental learning sessions.)

One Health Experience Program (Proposed)

- An Overview of One Health
- Participants engage in environmental learning by exploring a well-maintained, healthy forest and understanding its ecosystem functions. The program includes observing wetland biotopes, freshwater fish in tanks fed directly from the river, as well as visiting Tokara goats at the forest ranch. Through these hands-on experiences, students can learn about the species that inhabit these environments by interacting with them.

Program content can be tailored to your preferences.

Location	1288-3 Noda, Soeda Town, Tagawa District (next to the roadside station Kanyusha Hikosan)
Duration	One Health Workshop 30 mins (60 - 180 mins if combined with an adventure)
Fee	¥1,500 (adding One Health Research to an adventure such as a Canopy Course costs an additional ¥500)
Group Size	Up to 200 pax
Bus Parking	4 large buses
Contact	080-3975-4010

4 Shikanoshima Visitor Center



Renovated in 2023, the museum now showcases the unique natural environment and history of Shikanoshima, where the national treasure "Golden Seal" was discovered, along with information on One Health activities.

Location	1803-1 Katsuma, Higashi Ward, Fukuoka City
Contact	092-643-3369 (Fukuoka Prefecture Natural Environment Division, Natural Parks Section)

5 One Health Center (slated to open in 2027)



One Health Center is being developed to promote research, surveys, human resource development, and other activities related to measures against zoonotic diseases and drug-resistant bacteria.

Location	960-4 Takayanagi, Setaka-machi, Miyama City (Former site of College of Healthcare Management)
Contact	092-643-3623 (Fukuoka Prefecture One Health Promotion Division)

Exploring the SDGs



SUSTAINABLE DEVELOPMENT GOALS

SDGs: What Are the Sustainable Development Goals?

The SDGs (Sustainable Development Goals) are international goals adopted at the United Nations Summit in September 2015 as part of the 2030 Agenda for Sustainable Development. They consist of 17 goals and 169 targets aimed at achieving a world where no one is left behind, addressing a wide range of economic, social, and environmental challenges in an integrated manner by 2030.

United Nations' 17 Goals



- Goal 1** End poverty in all its forms everywhere
- Goal 2** End hunger, achieve food security and improved nutrition and promote sustainable agriculture
- Goal 3** Ensure healthy lives and promote well-being for all at all ages
- Goal 4** Ensure inclusive and equitable quality education and promote lifelong learning opportunities for all
- Goal 5** Achieve gender equality and empower all women and girls
- Goal 6** Ensure availability and sustainable management of water and sanitation for all
- Goal 7** Ensure access to affordable, reliable, sustainable and modern energy for all
- Goal 8** Promote sustained, inclusive and sustainable economic growth, full and productive employment and decent work for all
- Goal 9** Build resilient infrastructure, promote inclusive and sustainable industrialization and foster innovation
- Goal 10** Reduce inequality within and among countries
- Goal 11** Make cities and human settlements inclusive, safe, resilient and sustainable
- Goal 12** Ensure sustainable consumption and production patterns
- Goal 13** Take urgent action to combat climate change and its impacts
- Goal 14** Conserve and sustainably use the oceans, seas and marine resources for sustainable development
- Goal 15** Protect, restore and promote sustainable use of terrestrial ecosystems, sustainably manage forests, combat desertification, halt and reverse land degradation, and halt biodiversity loss
- Goal 16** Promote peaceful and inclusive societies for sustainable development, provide access to justice for all and build effective, accountable and inclusive institutions at all levels
- Goal 17** Strengthen the means of implementation and revitalize the global partnership for sustainable development

About the 17 SDGs (excerpt from the United Nations website, Exhibits)

Activities in Fukuoka Prefecture Selected by the Government as an SDGs Future City

An SDGs Future City is a city or region selected by the national government (Cabinet Office) from among those promoting fundamental and comprehensive initiatives aligned with the principles of the SDGs. These cities or regions are recognized for their high potential to achieve sustainable development by creating new value across economic, social, and environmental dimensions. In Fukuoka Prefecture, six municipalities have been designated, each implementing distinctive initiatives.

Kitakyushu City (selected in 2018)

Based at the "Kitakyushu Learning & ESD Station," local university students and other community members collaborate with NPOs to organize events such as "litter-picking activities" and "community exchange gatherings." These efforts also contribute to "city-building" and the "fostering of civic pride."



Source: Kitakyushu City

Fukuoka Prefecture Municipalities: The Journey of SDGs Certification

- 2018 Along with 29 cities nationwide, Kitakyushu City was selected for the "Municipal SDGs Model Project."
- 2019 Along with 31 cities nationwide, Omuta City and Fukutsu City were selected as "SDGs Future Cities."
- 2020 Along with 33 cities nationwide, Munakata City was selected as an "SDGs Future City."
- 2022 Along with 30 cities nationwide, Nogata City was selected as an "SDGs Future City."
- 2023 Along with 28 cities nationwide, Itoshima City was selected as an "SDGs Future City."
- 2024 Along with 23 cities nationwide, Yoshitomi Town was selected as an "SDGs Future City."

"SDGs Future City" : 206 cities (207 municipalities)
"Municipal SDGs Model Project" : 70 cities

Under the new curriculum guidelines, fully implemented since 2020, emphasis is placed on "active, interactive, and deep learning," encouraging students to identify challenges and explore solutions. Fukuoka Prefecture offers a variety of facilities where students can learn about the SDGs, supporting a high-quality educational journey.

Learning from the Pioneers: The History and Evolution of Water Infrastructure in Japan

MAP 1-C TOTO Museum Kitakyushu City

Opened in August 2015 as part of TOTO's 100th anniversary commemorative project, the facility features around 1,000 exhibits highlighting the company's founding spirit, dedication to craftsmanship, and the evolution of its plumbing products. Visitors can learn not only about the culture and history of water systems in Japan but also about TOTO's commitment to innovation and product development.



Learning Highlights

- Before touring the facility, visitors can attend a lecture to learn about the TOTO Group's initiatives toward the SDGs.
- Inside the facility, visitors explore exhibits and business activities related to the SDGs, using an educational booklet as a guide throughout the learning experience.

Admission fee	Free	Estimated tour duration
Group size	Up to 80 people	90 mins

Location 2-1-1 Nakashima, Kokurakita Ward, Kitakyushu City TEL.093-951-2534
Opening Hours Reservations only 19:00am - 21:00pm 3/3:00pm
Closed Mondays, summer holidays, and year-end/New Year holidays
Parking Large Buses (3 lots)
Access Approx. 5 mins by car from the Murasakigawa Exit on the Kitakyushu City Expressway

Manufacturing Center with Hands-On Plastic Recycling Experience

MAP 1-B TSUYAZAKI BASE CAMP Fukutsu City

The "Monozukuri Center" is located in Tsuyazaki, renowned for its beautiful beaches. It takes just 4 mins walk from the Tsuyazaki beaches. Taking advantages of the center's location, it offers opportunities to participate in beach cleanup activities. Visitors can engage in hands-on plastic recycling experiences, such as shredding PET bottle caps into chips using a crusher and remolding the shredded plastic into new products with a molding machine. Creating recycled items from plastics you bring yourself provides a unique, practical learning opportunity. Additionally, classroom-style environmental education is available, covering issues such as marine plastic pollution.



Learning Highlights

- The facility also engages in machinery manufacturing, allowing visitors to learn not only about environmental issues but also about high-quality technical and vocational skills.
- Visitors can participate in recycling activities using discarded plastics brought from home or plastic waste collected from beach cleanups. The exhibits also showcase the process of creating recycled plastic products and the finished items.
- Visitors can learn about environmental issues, such as the growing problem of marine plastic waste, and explore the story behind plastic recycling through hands-on environmental education activities.

Admission fee	¥500 per person	Facility and Instructor Fees (2 hours): ¥20,000	Estimated tour duration
Group size	one class (approx. 20 people)(Please inquire)		120 mins

Location 3-19-14 Tsuyazaki, Fukutsu City TEL.0940-51-3576
Opening Hours Online reservations via homepage (https://283bc.com)
Closed Tuesday and Thursday, every other Saturday and Sunday
Parking 8 cars
Access Approx. 20 mins by car from Koga IC on the Kyushu Expressway

Entry is not permitted for anyone with a temperature of 37.5°C or higher.

Western Japan's First Experiential English Education Center

MAP 1-C KITAKYUSHU GLOBAL GATEWAY Kitakyushu City

Opened in spring 2022, this is Western Japan's first hands-on English learning facility. Located on the expansive former Space World site, the facility provides an environment where children can immerse themselves in English. Zones include areas for practical English use, such as acting as a newscaster or performing English plays, as well as spaces designed for team-building activities.



Learning Highlights

- This is Western Japan's first facility where children can experience and learn English in a global-style setting without leaving Japan.
- Step outside the usual classroom and immerse in a world where only English is spoken, learning in a truly unique environment.
- By encouraging trial and error, the facility nurtures a spirit of challenge and fosters motivation for new learning.

Admission fee	Standard plan: 150 mins ¥4,400 Light plan: 90 mins ¥2,530	Estimated tour duration
Group size	Up to 240 people	Standard plan: 150 mins Light plan: 90 mins

Location 4-1 Higashida, Yahatahigashi Ward, Kitakyushu City TEL.093-883-7168
<https://www.kitakyushu-global-gateway.com/>
Opening Hours 9:30am - 6:00pm **Closed** Please inquire
Parking Approx. 6,500 spaces (including Higashida Project parking lot and nearby lots)
Access 2 mins by car from Kitakyushu Urban Expressway, Edamitsu IC

Hub Facility for Circular Urban Development

MAP 4-B Miyama city biomass center "Refrain" Miyama City

The facility mixes food waste with human waste and septic tank sludge to generate electricity through methane fermentation. The resulting digestate is recycled as a bio-fertilizer called "Minoron" and returned to farmland. Operating since 2018, the facility collects food waste from across the city and manages the distribution of the liquid fertilizer. Refuran is built on the site of a former elementary school, with parts of the old school building renovated to house rental offices, a café, and a food processing room, making it a lively community hub that attracts many visitors.



Learning Highlights

- Climate Change Mitigation: Recycling food waste halves the amount of waste incinerated and reduces carbon dioxide emissions.
- Sustainability: The facility produces electricity and fertilizer from local resources, creating a circular resource loop where outputs are reused as new resources.
- Community Revitalization: The facility, built in a renovated former school, hosts a café and events, making it a vibrant gathering place for the community.
- One Health: Recognized for its focus on environmental protection and related initiatives, the facility is designated as Fukuoka Prefecture One Health Awareness Facility No. 4.

Admission fee	Fee Required (please check the application website for details) https://www.city.miyama.lg.jp/s031/kanko/080/020/20210527090336.html	Estimated tour duration
Group size	Up to 40 people Reservation Required: Submit the application form via FAX or email at least one month in advance (form available on the application website).	90 mins

Location 121 Shigetomi, Yamakawa-machi, Miyama City TEL.0944-64-1545
(Miyama City Hall, Environmental Policy Division, Carbon-Free Society Promotion Section)
Opening Hours Tuesday - Thursday 10:30am - 12:00pm and 1:30pm - 3:00pm
Friday - Monday, public holidays and year-end/New Year holidays and other designated days
Parking 1 large bus allowed
Access Approx. 10 mins by car from Miyama Yanagawa IC on the Kyushu Expressway

Kitakyushu Eco-Town Next-Gen Eng Park

MAP 1-C **Kitakyushu Eco-Town Center** Kitakyushu City

At the Kitakyushu Eco-Town Center, visitors can tour facilities that teach about recycling, a circular society, and various forms of energy through the Kitakyushu Eco-Town and the Next Generation Energy Park. By observing how materials discarded as waste are transformed into resources at recycling plants and exploring large-scale renewable energy facilities, visitors can gain new insights through learning experiences related to waste reduction and the importance of energy.



Learning Highlights

- Visitors can learn about the circular economy and energy through lectures by staff covering topics such as 3Rs (Reduce, Reuse, Recycle), resource circulation, renewable energy, and energy conservation using PowerPoint presentations and DVDs, as well as guided explanations in the exhibition rooms.
- By touring recycling plants and energy facilities, visitors gain awareness of actions they can take in their own daily lives, encouraging reflection and inspiring steps toward achieving the SDGs.

Admission fee	Free Fee applies for Recycling Plant Tour (Child: ¥50, Senior High School Student and older: ¥100)	Estimated tour duration	90 - 120 mins
Group size	200 people Please refer to the website for reservations. https://www.kitaq-ecotown.com/tour/		

Location 10-20 Koyo-machi, Wakamatsu Ward, Kitakyushu City TEL.093-752-2881
Opening Hours Reservations required for factory tours 9:30am - 11:30am, 1:30pm - 3:30pm
Closed Sundays, public holidays, and year-end/New Year holidays
Parking Large buses (8 lots)
Access Approx. 10 mins by car from the Wakato Exit of the Kitakyushu City Expressway

Exploring Coexistence between Humans and Nature through Rich Natural Environments

MAP 1-C **Hiraodai Nature Observation Center** Kitakyushu City

At Hiraodai in Kitakyushu Quasi-National Park, visitors can observe karst landscapes and the rich activity of plants and animals, gaining a deeper appreciation for the value of nature. The Hiraodai Nature Observation Center was built with the support of many people who love Hiraodai, to protect and nurture this irreplaceable natural environment and pass it on to future generations. Here, visitors can reconnect with and rediscover the wonders of nature.



Learning Highlights

- Visitors can discover the richness of Hiraodai's natural environment through staff-led exhibit explanations and video presentations.
- Learning about the formation and features of Hiraodai's landscapes promotes awareness of the importance of nature.
- Paid programs such as trekking and cave exploration offer opportunities for deeper, hands-on learning.

Admission fee	Free (Fee applies for experiential programs)	Estimated tour duration	60 - 120 mins
Group size	50 people (varies by program)		

Location 1-4-40 Hiraodai, Kokuraminami Ward, Kitakyushu City TEL.093-453-3737 <https://sites.google.com/view/hiraodai>
Opening Hours 9:00am - 5:00pm (last entry: 4:30pm)
Closed Mondays, year-end/New Year holidays
Parking Large buses (4 lots)
Access Approx. 20 mins by car from Kokuraminami IC on the Kyushu Expressway

Preserving Healthy Bodies and Clean Water

MAP 1-C **SHABONDAMA SOAP Co., Ltd.** Kitakyushu City

Shabondama Soap produces additive-free soap that is gentle on both people and the environment. Learn how their products are made-from mixing ingredients to packaging, while thinking about the importance of keeping your body and water clean.



Learning Highlights

- Experience making gentle, environmentally friendly additive-free soap at Shabondama Soap.
- Discover how additive-free soap is made and learn the meaning behind the company's motto: "Preserving Healthy Bodies and Clean Water."

Admission fee	Free	Estimated tour duration	70 - 90 mins
Group size	From ten people, up to four classes		

Location 2-23-1 Minamifutajima, Wakamatsu Ward, Kitakyushu City
 Tour reservation: TEL.093-588-5489

Discover Your Interests through 70 Hands-On Career and Social Experiences

MAP 2-B **KidZania Fukuoka** Fukuoka City

This facility allows children to learn how society works through hands-on occupational and social experiences. By participating in "working" experiences at KidZania, along with pre- and post-activity learning, children can understand their connection to society and consider what they can do to help create a better future.



Learning Highlights

- By using the Career Education and SDGs Program worksheets, children can deepen their learning and make the KidZania experience even more meaningful.
- (Example) (1)Pre-learning: Write down your impressions of different jobs and think about the relationship between the future and work; list the jobs you would like to try.→ (2)KidZania experience→(3) Post-learning: Reflect on working toward a better world and think about what you can do now

Admission fee	School group rates: ¥3,200 (elementary and junior high school students), ¥1,900 (adults) One teacher or staff member is admitted free for every 15 students. Maximum visit duration: 6 hours	Estimated tour duration	30 - 40 mins (per activity)
Group size	300 people (each activity accommodates two - eight participants) For groups over 300 people, please inquire		

Location LaLaport FUKUOKA, 6-23-1 Niaka, Hakata Ward, Fukuoka City TEL.092-778-2178
Opening Hours Weekdays (single session): 9am - 5pm Two-session schedule may be implemented
 Advance reservation required (for visits within 3 weeks, please inquire)
Closed School groups cannot visit on weekends or during holiday seasons. H.S. (Holiday Season) refers to long-term breaks designated by KidZania. School group rates apply only on weekdays. H.S. (Holiday Season) refers to long-term breaks designated by KidZania.
Access Approx. 7 mins by car from Fukuoka Urban Expressway Tsukiguma JCT

Create a Better Everyday Life for The Many People

MAP 2-B **IKEA Fukuoka Shingu** Shingu Town

Under the vision of "Create a Better Everyday Life for The Many People," IKEA offers furniture and home goods designed with appearance, functionality, quality, materials, and delivery efficiency in mind-all at affordable prices. Visitors can explore the store to learn not only about environmentally conscious products but also about sustainable systems such as solar power and geothermal energy. The spacious restaurant offers sustainable, plant-based menu options and can accommodate groups of up to 100 people (weekdays only, reservation required).



Learning Highlights

- At IKEA Fukuoka Shingu, visitors can learn not only about environmentally conscious facilities and materials but also about products manufactured with consideration for the production environment.
- In addition to the SDGs, learning programs can be tailored to themes such as "Global Business Management" and "Career Development."

Admission fee	Free	Estimated tour duration	60 - 120 mins
Group size	Up to 100 people Reservations required: Book up to three months before your visit.		

Location 2-9-1 Chuo Ekimae, Shingu Town, Kasuya District TEL.050-4560-0494 <https://www.ikea.com/jp/ja/stores/fukuoka-shingu/>
Opening Hours Reservations required: Weekdays 10:00 am - 5:00pm
 Please reserve via fukuokashingu@ingka.ikea.com
Closed New Year's Day
Parking Large buses (5 lots)
Access If using the Fukuoka Urban Expressway Route 1, take the Kashii-Higashi IC and drive approximately 6 km north toward Kitakyushu on Route 3.

Learn About SDGs at JICA Kyushu

MAP 1-C **JICA Kyushu** Kitakyushu City (Japan International Cooperation Agency, Kyushu Center)

JICA aims to contribute to the achievement of the SDGs through international cooperation projects. At JICA Kyushu, visitors can deepen their understanding of Japan and the world through lectures, interactive talks, and workshops on international cooperation. In addition, the Exhibition Corner, which changes its theme every quarter, allows visitors to see and experience global issues and JICA's initiatives firsthand.



Learning Highlights

- Learn about the realities and cultures of developing countries from returned JICA Overseas Cooperation Volunteers, and explore global issues through workshops that encourage reflection on the SDGs.
- Understand how Japan is connected to the rest of the world.

Admission fee	Free If an external lecturer is invited for a talk, a speaker honorarium may apply.)	Estimated tour duration	90 - 120 mins
Group size	Up to 40 people (For groups exceeding 40, please consult in advance.)		

Location 2-2-1 Hirano, Yahatahigashi Ward, Kitakyushu City TEL.093-671-6311 (Main)
 Tour reservations: TEL.093-671-8678
Opening Hours By reservation only - 10:00am - 5:00pm
Closed Weekends, public holidays, and year-end/New Year holidays
Parking Large buses (2 lots)
Access Approx. 5 mins by car from Kitakyushu Urban Expressway - Otani Exit

Learning SDGs through Art Museums

MAP Fukuoka City Center **Fukuoka Asian Art Museum** Fukuoka City

At the Fukuoka Asian Art Museum, you can enjoy exhibitions and school programs focused on Asian culture and art. Through workshops and exchanges with Asian artists, participants can learn about Asian creativity and culture from multiple perspectives.



Learning Highlights

- Learn about contemporary Asian art through workshops and discussions.
- Create works inspired by SDGs and think about sustainability through art.

Admission fee	Free	Estimated tour duration	80 mins
Group size	100 people (Please inquire)		

Location 7F-8F, Riverain-Center BLD., 3-1 Shimokawabata-machi, Hakata Ward, Fukuoka City TEL.092-263-1100
Opening Hours By reservation only - Please book up to one month in advance.
Closed Wednesday (or the following day if a holiday falls on Wednesday), and year-end/New Year holidays
Access Approx. 5 mins by car from the Gofukumachi Exit of the Fukuoka City Urban Expressway

Learning SDGs through Asakura

MAP 3-C **Yamada Weir** Asakura City

Dr. Tetsu Nakamura, who passed away in December 2019, drew inspiration from Asakura City's Yamada Weir for his irrigation projects supporting reconstruction in Afghanistan. Learning about his achievements and philosophy allows visitors to understand the link between water and peace and to reflect on what it means to be a truly global citizen.



Learning Highlights

- Learn about the "peace" brought by the construction of the irrigation channels.
- Learn what it means to be a true global citizen and the mindset needed to achieve the SDGs.

Program fee	¥4,752	Estimated tour duration	3 hours 30 mins
Group size	Up to 100 people		

Location Yamada, Asakura City TEL.0946-24-6758 (Asakura Tourism Association)
Opening Hours By reservation only (Contact) JTB Fukuoka Branch Education Sales Department TEL.092-752-8002
Closed None in particular (please inquire)
Parking Large buses (5 lots)
Access Approx. 15 mins by car from Asakura IC on the Oita Expressway

Tenmangu Shrine, dedicated to Sugawara no Michizane, is renowned for its beautiful plum blossoms on the grounds.

MAP 2-B **Dazaifu Tenmangu Shrine** Dazaifu City

One of Fukuoka's most renowned landmarks, this shrine welcomes around ten million visitors annually, including many students praying for success in their exams. Within the grounds stands the sacred plum tree known as "Tobiume" (Flying Plum Tree), which is said to have flown overnight from Kyoto in adoration of Michizane.



Learning Highlights

From the main hall to the grand gate and arched bridge, the shrine's magnificent architecture offers plenty to admire

This shrine honors Sugawara no Michizane, revered as the "God of Learning, Culture, and the Arts." The main hall, constructed in 1591 by Lord Kobayakawa Takakage of the Chikuzen domain directly over Michizane's tomb, is currently undergoing major restoration and has been designated an Important Cultural Property of Japan. The main hall itself stands as both a magnificent shrine and a mausoleum.



Since May 2023, the shrine has been undergoing a major restoration of its Important Cultural Property, the main hall, for the first time in 124 years. The three-year project includes the construction of a temporary hall in front of the main hall to welcome visitors during the restoration period.

Admission fee	Free	Group size	No specification	Estimated tour duration	30 - 60 mins
----------------------	-------------	-------------------	-------------------------	--------------------------------	---------------------

Location 4-7-1 Saifu, Dazaifu City TEL.092-922-8225 **Opening Hours** Varies depending on the season **Closed** None
Parking Large buses: 100 lots **Access** Approx. 15 mins by car from Dazaifu IC on the Kyushu Expressway



One of the World Heritage Sites: "The Sacred Island" Okinoshima and Associated Sites in the Munakata Region

MAP 1-B **Munakata Taisha Shrine** Munakata City

Known as the Three Shrines, Okitsumiya, Nakatsumiya, Hetsumiya, this shrine is the head shrine for the 6,200 Munakata shrines across Japan and welcomes around one million visitors annually.

Learning Highlights

View Precious National Treasures in a Treasure Hall

This historic shrine is dedicated to the three Munakata goddesses, daughters of Amaterasu. Okitsumiya, located on Okinoshima, enshrines Tagorihime no Kami and preserves the remains of national rituals dedicated primarily to the peace and security of the nation and the imperial family. The treasure hall, displaying precious sacred objects excavated from Okinoshima, is a must-visit.



Admission fee	Free (Treasure Hall: ¥400 for elementary and junior high school students, ¥500 for high school and university students, ¥800 for adults)	Group size	No specification	Estimated tour duration	90 mins
----------------------	---	-------------------	-------------------------	--------------------------------	----------------

Location 2331 Tashima, Munakata City TEL.0940-62-1311 <http://www.munakata-taisha.or.jp> **Opening Hours** 6:00am - 5:00pm (entry to the Treasure Hall is from 9:00am - 4:00pm)
Closed None **Parking** Large buses (7 lots) *subject to change depending on circumstances **Access** Approx. 25 mins by car from Wakamiya IC on the Kyushu Expressway
 Access to Okitsumiya (Okinoshima) is not permitted.

Tomb of the Munakata Clan Who Actively Connected with Asia

MAP 1-B **Shimbaru-Nuyama Mounded Tomb Group** Fukutsu City

A cluster of burial mounds of the Munakata clan, an influential family that crossed the seas from ancient Japan to engage with the Chinese mainland and the Korean Peninsula and conducted rituals on Okinoshima.

Learning Highlights

The Munakata clan possessed advanced maritime skills, enabling them to assist the Yamato court in diplomacy with China and the Korean Peninsula. Visitors can learn about this history through guided tours and by exploring the burial mounds.



Admission fee	Free	Group size	No specification	Estimated tour duration	30 - 60 mins
----------------------	-------------	-------------------	-------------------------	--------------------------------	---------------------

Location 1382 Nuyama, Fukutsu City TEL.0940-62-5093 <http://www.city.fukutsu.lg.jp>
Opening Hours All day **Closed** None
Parking Large bus (1 lot) *Separate bus parking available. Please inquire in advance.
Access Approx. 30 mins by car from Koga IC on the Kyushu Expressway

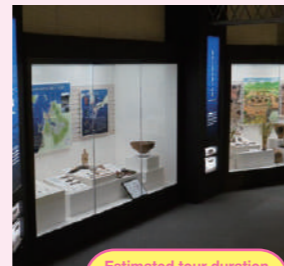
Experience Okinoshima, the "Shosoin of the Sea"

MAP 1-B **Sea Road Munakatakan Museum** Munakata City

This is a guidance facility for the World Heritage Site "The Sacred Island of Okinoshima and Associated Sites in the Munakata Region."

Learning Highlights

Focusing on the history of the Munakata region, which connected northern Kyushu with the Korean Peninsula, visitors can learn about active exchanges in ancient East Asia, including Japan. Hands-on historical activities, such as making magatama beads and clay flutes, are also highly popular.



Admission fee	Free (fee applies for historical learning experience)	Group size	Up to 70 people	Estimated tour duration	60 mins (90 mins including the historical learning experience)
----------------------	--	-------------------	------------------------	--------------------------------	---

Location 588 Fukada, Munakata City TEL.0940-62-2600 <http://searoad.city.munakata.lg.jp/>
Opening Hours 9:00am - 6:00pm
Closed Closed on Mondays (if a public holiday falls on a Monday, the following weekday will be closed), December 29 - 31
Parking Bus parking available upon request
Access Approx. 20 mins by car from Wakamiya IC on the Kyushu Expressway

In Japanese history, cultural and diplomatic exchanges with Asia began from Fukuoka. Museums such as the KYUSHU NATIONAL MUSEUM and the Kyushu Historical Museum house extensive historical materials related to these interactions. Visiting these sites provides an excellent opportunity to deepen your understanding of Japan's historical connections with Asia.

The Fourth National Museum after Tokyo, Kyoto and Nara

MAP 2-B **KYUSHU NATIONAL MUSEUM** Dazaifu City

The theme of the Cultural Exchange Exhibition is "Maritime Routes, Asian Pathways" (permanent exhibition). Through around 800 cultural artifacts, it showcases how Japanese culture was shaped through exchanges with other Asian countries. The museum also hosts four special exhibitions each year.



Learning Highlights

A wealth of educational opportunities, including exhibitions and workshops on cultural exchange with Asia

Leveraging Dazaifu in Kyushu, historically a point of contact with Asia through missions like the Kentōshi, this museum explores the formation of Japanese culture from an Asian historical perspective. The first floor hosts workshops, concerts, and other events, and features a free interactive gallery, "Ajippa," where visitors can experience Asian culture through play.



4F Exhibition Gallery

Admission fee	4F Cultural Exchange Exhibition (Permanent Exhibition) / Free for high school students and younger (show proof of date of birth)	Group size	No specification	Estimated tour duration	90 mins
----------------------	--	-------------------	-------------------------	--------------------------------	----------------

Location 4-7-2 Ishizaka, Dazaifu City TEL.050-5542-8600(NTT Hello Dial) <http://www.kyuhaku.jp> **Opening Hours** 9:30am - 5:00pm (last entry at 4:30pm)
Closed Mondays (or the following day if Monday is a public holiday), and year-end holiday **Parking** Large buses (9 lots) *fee applies
Access Approx. 20 mins by car from the Kyushu Expressway Dazaifu IC or Chikushino IC



From Ancient to Modern: A Facility Dedicated to Researching Kyushu's History

MAP 3-B **Kyushu Historical Museum** Ogori City

This research center delves into the history of ancient Kyushu, including archaeological studies of Dazaifu's historic sites. It also serves as an educational outreach center, with the restoration of excavated artifacts open to the public.

Learning Highlights

Exploring Kyushu's History and Unique Heritage through Valuable Cultural Assets

The Kyushu Historical Museum, which showcases history from ancient to modern times, has a particularly rich collection of materials related to Dazaifu, the government office that oversaw Kyushu in ancient times. Groups of ten to 20 people will be guided by staff on a museum tour. Behind-the-scenes tours are particularly popular, and pre- and post-visit online learning is also available.



Admission fee	Free for junior high students and below. High school and university students: ¥150 (¥100 for groups of 20 or more) — applies to Exhibition Room one and three. *For school trips, fees for high school/university students and accompanying teachers may be waived with prior application. Access to Exhibition Room two and four is free.	Group size	Up to 160 people, with *up to 80 people per session. Rotation system available to accommodate larger groups.	Estimated tour duration	60 - 90 mins
----------------------	--	-------------------	---	--------------------------------	---------------------

Location 5208-3 Mitsusawa, Ogori City TEL.0942-75-9575 <https://kyureki.jp> **Opening Hours** 9:30am - 4:30pm (last entry at 4:00pm)
Closed Mondays (or the following day if Monday is a public holiday), year-end/New Year holidays **Parking** Large buses (4 lots)
Access Approx. 15 mins by car from Chikushino IC on the Kyushu Expressway

A Place for Negotiations with Tang and Silla

MAP Fukuoka City Center **Korokan Ruins Museum** Fukuoka City

A guesthouse that welcomed foreign envoys and hosted the departure and return of Japanese missions to Tang China. It served as an important gateway for international diplomacy.

Learning Highlights

Among the guesthouses built in ancient times (Asuka, Nara, and Heian periods) in Heian-kyo and Naniwa, the only one whose location has been identified is the Korokan of Tsukushi. Inside the site, visitors can view the foundation stones of buildings constructed in the late Nara period.



Admission fee	Free	Group size	Up to about 150 people (in several groups)	Estimated tour duration	20 - 30 mins
----------------------	-------------	-------------------	---	--------------------------------	---------------------

Location 1 Jonai, Chuo Ward, Fukuoka City TEL.092-721-0282
Opening Hours 9:00am - 5:00pm (last entry at 4:30pm) **Closed** December 29 - January 3
Parking Large buses (19 lots) Times Fukuoka Castle Sannomaru Parking Lot (fee applies)
Access Approx. 10 mins by car from the Nishi Park Exit of the Fukuoka Urban Expressway

A Moment to Experience Fukuoka's History and Culture

MAP Fukuoka City Center **Fukuoka City Museum** Fukuoka City

Featuring the theme "Exchange with the Continent," the exhibit introduces the history of Fukuoka and the lives of its people from ancient times to the present.

Learning Highlights

The museum displays the National Treasure Golden Seal "King of Na of Wa in Han," the famous spear "Nihon-go" sung about in the Kuroda Bushi song, and the oldest surviving working Japanese automobile, the "Arrow-go." The museum also has an interactive learning room where visitors can freely explore musical instruments, clothing, and everyday items from various parts of Asia.



Admission fee	Free Admission to the permanent exhibition: Free for junior high school students and younger, groups of 20 or more: High school students ¥100, Adults ¥150	Group size	No specification	Estimated tour duration	45 mins
----------------------	---	-------------------	-------------------------	--------------------------------	----------------

Location 3-1-1 Momochihama, Sawara Ward, Fukuoka City TEL.092-845-5011 <http://museum.city.fukuoka.jp/>
Opening Hours 9:30am - 5:30pm (last entry at 5:00pm)
Closed Closed on Mondays (or the following day if Monday is a public holiday), December 28 - January 4. *Opening hours and closing days may change during the summer.
Parking Large buses (10 lots)
Access Approx. 3 mins by car from the Momochi Exit of the Fukuoka Urban Expressway

An Industrial Heritage That Has Spanned Centuries

MAP 1-C **World Heritage** **Yahata Works Former Head Office Observation Space** **Kitakyushu City**

This site is part of the "Sites of Japan's Meiji Industrial Revolution," a UNESCO World Heritage listing. Built over 100 years ago, the steelworks played a major role in Japan's modernization. The repair workshop is still in operation today.



Photo: Nippon Steel Corporation, Kyushu Works
Former Main Office combining Japanese and Western architectural styles (not open to the public)

Learning Highlights

The Former Main Office is located within the steelworks premises and is not open to the public. However, the observation area features explanatory panels and historic photographs, offering insight into the steelworks' history. A tour guide is also available on site.



Admission fee	Free	Group size	No specification	Estimated tour duration	20 mins
---------------	-------------	------------	------------------	-------------------------	----------------

Location Oaza Edamitsu, Yahatahigashi Ward, Kitakyushu City TEL.093-582-2922 <https://kitaq-whs.jp>
Opening Hours 9:30am - 5:00pm (last entry at 4:30pm)
Closed Mondays (or the following Tuesday if Monday is a public holiday), and year-end/New Year holidays (December 29 - January 3) **Parking** Large buses (5 lots / free)
Access Approx. 3 mins by car from the Edamitsu Exit on the Kitakyushu Urban Expressway

History of Yahata Works

A major national project of the Meiji era

The Yahata Works was built with German technology and guidance, aiming to produce steel domestically. Since beginning operations in 1901 (Meiji 34), it has supported the growth of Japan's heavy industry.



Interior of the Repair Workshop (not open to the public)



Yahata Works and Former Head Office in 1912 (Meiji 45)



Photo: Nippon Steel Corporation Kyushu Works

In 1900 (Meiji 33), government officials such as Hirobumi Ito and Kaoru Inoue, along with local coal mine owners like Keichiro Yasukawa and Denemon Ito, visited the blast furnace which was nearing completion.

Experience and Learn from a Facility that Has Been in Operation for Over 100 Years

MAP 1-B **World Heritage** **The Onga River Pumping Station** **Nakama City**

The pump station, completed in 1910 (Meiji 43), supplied the industrial water necessary for Yahata Works. Equipped with cutting-edge technology of the time, including a steam pump imported from the United Kingdom, it played a key role in supporting steel production.



Steam pump at The Onga River Pumping Station during operations

Learning Highlights

As the facility is still in operation, it is not open to the public. However, a tour guide will provide detailed explanations from the observation area.

Admission fee	Free	Group size	Up to 90 people (tour)	Estimated tour duration	15 mins 60 mins if including the information center
---------------	-------------	------------	------------------------	-------------------------	--



Photo: Nippon Steel Corporation, Kyushu Works
Exterior of The Onga River Pumping Station (non-public facility)

Location 1-3-1 Dotonouchi, Nakama City (Information Center: 660-1 Oaza Habu, Nakama City) TEL.093-245-4665 http://www.city.nakama.lg.jp/sangyo/kanko/sekaisan_150115.html
Opening Hours 9:00am - 6:00pm
Closed No fixed closing days for tours. The information center is closed on Tuesdays. Closed during the year-end/New Year holidays (Tuesday visits can be arranged by request)
Parking Large buses (2 lots)
Access 15 mins by car from Kurate IC on the Kyushu Expressway

From the late Edo period to the Meiji era, Japan achieved rapid industrialization in an exceptionally short time. Among the foundations of this progress were the iron, steel, and coal industries that flourished in Fukuoka Prefecture. Discover the industrial heritage of Fukuoka—sites of great importance not only to Japan's modernization but also in world history.

Learn about the History of the Miike Coal Mine and Japan's Modernization

MAP 4-B **World Heritage** **Omuta Coal Industry and Science Museum** **Omuta City**

Omuta City was once home to Japan's largest coal mine. Through interactive exhibits, visitors can learn about the history of the coal industry that supported Japan's modernization and postwar recovery, as well as explore broader themes of energy, including coal.

Learning Highlights



Mining machines and underground trains...

Explore a realistically recreated mine tunnel

At the "Dynamic Tunnel," visitors can experience a recreated underground mine 400m below ground. In the "Voice Museum," films featuring firsthand accounts from people who worked in the mines provide insight into the history of the Miike Coal Mine. Visiting this site alongside the UNESCO World Heritage 'Miyanohara Pit' and 'Manda Pit' offers an even deeper understanding of Japan's Meiji Industrial Revolution heritage.

Admission fee	School groups / elementary and junior high school students: ¥130, high school students: ¥260	Group size	Up to 120 people	Estimated tour duration	60 - 90 mins
---------------	--	------------	------------------	-------------------------	---------------------



Location 6-23 Misaki-machi, Omuta City TEL.0944-53-2377 <http://www.sekitan-omuta.jp/>
Opening Hours 9:30am - 5:00pm
Closed Mondays (or the following weekday if Monday is a public holiday), year-end/New Year holidays
Parking Large buses welcome
Access Approx. 25 mins by car from Nankan IC on the Kyushu Expressway

Main Pit of the Miike Coal Mine, renowned for its 400,000-500,000-ton yearly output

MAP 4-B **World Heritage** **Miyanohara Pit at the Miike Coal Mine, Former Miike Coal Mine Railroad Site** **Omuta City**

This is one of the facilities of the Miike Coal Mine, which played a key role in Japan's modernization. Coal mine-related structures remain, including the brick hoist engine room that was actually used and Japan's oldest surviving steel headframe, both of which preserve the look and feel of the period.



Guided tours offer insight into the Miike Coal Mine's role and energy production. Visitors can also see the former dedicated railway track from Miyanohara Pit. Some guides are former coal miners, providing firsthand insight into the mine's history and its contribution to energy development.

Learning Highlights

Main Pit from the late Meiji to Taisho Period

This is the first pit independently developed by Mitsui after the Miike Coal Mine was transferred from the government. Opened in 1898 (Meiji 31), the site still preserves the Second Shaft facilities completed in 1901 (Meiji 34), including the headframe and hoist engine room, offering a glimpse into the mine's operations at the time.



Admission fee	Free	Group size	Up to 80 people (please inquire for groups over 80)	Estimated tour duration	30 - 50 mins
---------------	-------------	------------	---	-------------------------	---------------------

Location 1-86-3 Miyahara-machi, Omuta City TEL.0944-41-2750 <https://www.miike-coalmines.jp/miyanohara.html>
Opening Hours 9:30am - 5:00pm (last entry at 4:30pm)
Closed Last Monday of every month (or the following day if it is a public holiday)
Parking Large buses (5 lots)
Access Approx. 25 mins by car from Nankan IC on the Kyushu Expressway

A Major Meiji Era Harbor Project: Still in Operation Today

MAP 4-B **World Heritage** **Miike Port (Miike Port Observation Point)** **Omuta City**

Miike Port, opened in 1908 (Meiji 41), has retained its original appearance and continues to operate as an industrial port today.

Learning Highlights

At the time, Miike Port was the only port in Japan equipped with a lock gate dock, allowing 10,000-ton ships to navigate the Ariake Sea despite its large tidal range. Visitors can learn about the history and role of Miike Port, which was a driving force behind Japan's modernization. A guided tour (reservation required) is recommended.

Admission fee	Free	Group size	Up to 40 people (please inquire for groups over 80)	Estimated tour duration	60 mins
---------------	-------------	------------	---	-------------------------	----------------

Location Shinko-machi, Omuta City TEL.0944-41-2750(Omuta City Tourism and Hospitality Division) <https://www.miike-coalmines.jp/port.html>
Opening Hours 9:30am - 5:00pm (last entry at 4:30pm), open only on Saturdays, Sundays and public holidays (excluding year-end/New Year holidays)
Closed Last Monday of every month (or the following day if Monday is a public holiday)
Parking Large buses (10 lots) **Access** Approx. 30 mins by car from Nankan IC on the Kyushu Expressway



Venture into Neighboring Prefectures to Tour World Heritage Sites

MAP 4-B **World Heritage** **Manda Pit at the Miike Coal Mine** **Arao City, Kumamoto Prefecture**

Following the Miyanohara Pit, this was the main pit of the Miike Coal Mine. As Japan's largest shaft during the Meiji and Taisho periods, it played a significant role in the country's industrialization.

Learning Highlights

The site features massive steel headframes and brick hoist engine rooms used during the Meiji, Taisho, and Showa periods, preserved almost exactly as they were. Visitors can get a sense of the work done by coal miners at the time. Guided tours are available (advance reservation required).

Admission fee	Groups of 20 or more: elementary and junior high school students: ¥160, high school students: ¥240, adults: ¥320	Group size	20 - 100 people	Estimated tour duration	60 mins
---------------	--	------------	-----------------	-------------------------	----------------

Location 200-2 Haramanda, Arao City, Kumamoto Prefecture TEL.0968-57-9155 (Manda Mine Station) <https://www.city.arao.lg.jp/krashi/shisetsu/mandakou/page3244.html>
Opening Hours 9:30am - 5:00pm (last entry at 4:30pm)
Closed Closed on Mondays (or the following day if Monday is a public holiday), year-end/New Year holidays
Parking Large buses (7 lots available at the station / free)
Access Approx. 30 mins by car from Nankan IC on the Kyushu Expressway



A Port Town Reflecting the Prosperity of a Global Trading Port

MAP 1-C Explore Industrial Heritage in Mojiko Retro Kitakyushu City



[Former Osaka Shosen]
The Osaka Shosen Moji Branch, built in 1917 (Taisho six), has been restored. The first floor now houses the "Watase Seizo Gallery."



[Former Moji Mitsui Club]
Built in 1921 (Taisho ten) as Mitsui & Co.'s social club, this building was constructed using traditional European wooden construction methods.



[Former Moji Customs House]
A modern two-story brick building with a tiled roof. The second floor features an observation room with panoramic views of the Kanmon Strait and the Mojiko Retro.



[Kyushu Railway Museum]
The museum features permanent and special exhibitions showcasing the history of railways in Kyushu. Visitors can also see nostalgic trains, including the C59 and 9600 models.

Opened in 1889 (Meiji 22), Moji Port flourished as an international trading port. Leveraging Kitakyushu's industrial strength, it served especially as a trade hub for Asia. At the time, around 60 passenger ships bound for Taiwan, China, and Europe departed each month, attracting travelers eager to journey abroad. Many historic buildings remain, including the Former Moji Mitsui Club, where Albert Einstein and his wife stayed, and the Former Moji Customs House, used as a customs office until the early Showa period, both open for tours today.

Learning Highlights

Why does Moji Port have a Western atmosphere? Discover its history as a key hub of international trade.

Through historic buildings and materials, such as the "Former Osaka Shosen" and the "Former Moji Customs House," visitors can learn about Moji Port's history as a thriving international trade hub from the Meiji to Taisho periods. At the Kyushu Railway History Museum, visitors can see and board wooden passenger cars from the Meiji era.



[Former Osaka Shosen]

Admission Fee Free
Gallery admission: ¥70 yen for elementary and junior high school students, ¥150 yen for adults
Group size No specification (up to 30 people per session)
Estimated tour duration 15 - 30 mins
Location 7-18 Minato-machi, Moji Ward, Kitakyushu City
Opening Hours 9:00am - 5:00pm
Closed None
Parking Parking lot next to Port House - large buses (12 lots)
Parking lot next to Kanmon Strait Museum - large buses (20 lots)
Access Approx. 9 mins by car from Moji IC on the Kyushu Expressway

[Former Moji Mitsui Club]

Admission Fee Free
Gallery admission: ¥70 yen for elementary and junior high school students, ¥150 yen for adults
Group size No specification (up to 30 people per session)
Estimated tour duration 15 - 30 mins
Location 7-1 Minato-machi, Moji Ward, Kitakyushu City
Opening Hours 9:00am - 5:00pm
Closed None
Parking Parking lot next to Port House - large buses (12 lots)
Parking lot next to Kanmon Strait Museum - large buses (20 lots)
Access Approx. 9 mins by car from Moji IC on the Kyushu Expressway

[Former Moji Customs House]

Admission Fee Free
Group size No specification (up to 30 people per session)
Estimated tour duration 15 - 30 mins
Location 1-24 Higashiminato-machi, Moji Ward, Kitakyushu City
Opening Hours 9:00am - 5:00pm
Closed None
Parking Parking lot next to Port House - large buses (12 lots)
Parking lot next to Kanmon Strait Museum - large buses (20 lots)
Access Approx. 9 mins by car from Moji IC on the Kyushu Expressway

[Kyushu Railway Museum]

Admission Fee under four: Free, junior high school age and under: ¥150, adults: ¥300
Group size Up to 150 people
Estimated tour duration 30 - 60 mins
Location 2-3-29 Kiyotaki, Moji Ward, Kitakyushu City TEL.093-322-1006
Opening Hours 9:00am - 5:00pm (last entry at 4:30pm)
Closed No fixed holidays; check <http://www.k-rhm.jp/schedule/> for updates
Parking Parking lot next to Port House - large buses (12 lots)
Parking lot next to Kanmon Strait Museum - large buses (20 lots)
Access Approx. 7 mins by car from Moji IC on the Kyushu Expressway

[Kanmon PAY] The Kanmon Area Common Coupon "Kanmon PAY" (paper coupon) can be used at participating shops, restaurants, souvenir stores, and tourist facilities in both Moji Port and Shimonoeki. For just ¥1,000, you can receive ¥1,100 worth of value. Please apply through a travel agency.
Inquiries: 093-331-6700 (Mojiko Co-creation Project Team)
Website: <https://kanmon-pay.com/>

Explore the History of Energy and Coal that Supported Japan's Modernization

MAP 2-C Tagawa City Coal Mining Historical Museum Tagawa City

This facility introduces the history and culture of the Chikuho Coalfield, which supplied coal throughout Japan. The two large chimneys of the former Mitsui Tagawa Mining Office on the grounds are iconic symbols of Tagawa, the coal capital.

Learning Highlights

Learn about the coal that supported Japan's industries through the history of Tagawa, a former coal-mining town

Learn about coal mining methods and the lives and culture of the people who worked in the mines. The museum houses the "Sakubei Yamamoto Collection," comprising 627 mining-themed paintings and diaries that became Japan's first UNESCO Memory of the World registration. Visitors can gain a comprehensive understanding of the Chikuho coal industry, which played a vital role in Japan's modernization.



Admission fee Groups of 20 or more: elementary and junior high school students: ¥30, high school students: ¥70, adults: ¥280
Group size No specification (advance confirmation required for guided tours for groups of 20 or more)
Estimated tour duration 60 mins

Location 2734-1 Oaza Ita, Tagawa City TEL.0947-44-5745 <https://www.joho.tagawa.fukuoka.jp/list00784.html>
Opening Hours 9:30am - 5:30pm (last entry at 5:00pm) **Closed** Closed on Mondays (or the following day if Monday is a public holiday), December 29 - January 3
Parking Large buses (3 lots) *Please inquire for a fourth or more **Access** Approx. 40 mins by car from Yahata IC on the Kyushu Expressway

Fukuoka's Coal-Driven History Reflected in Elegant Modern Japanese-Style Residences

MAP 2-B Former Residence of Ito Denemon Iizuka City

Built in the Meiji period and expanded during the Taisho to early Showa eras, this modern Japanese-style residence was home to coal magnate Ito Denemon and his wife, Yanagiwara Byakuren. The mansion offers a glimpse into the history of the coal industry in Chikuho and the culture of the people involved.



The building and garden are designated as national cultural properties. <Important Cultural Property (Building)><Place of Scenic Beauty (Garden)>



The Western-style reception room with a sense of grandeur and elegance

Learning Highlights

The main residence of Chikuho's coal magnate, Ito Denemon. The property covers approximately 2,300 tsubo (about 7,600 square meters), with a building footprint of around 300 tsubo (about 990 square meters). This modern Japanese-style home features a vast strolling garden and incorporates Western design elements, showcasing a harmonious blend of Japanese and Western architecture, as well as delicate and elegant decorative details.



The grand hall and Western reception rooms showcase exquisite attention to architectural detail

Admission fee Groups of 20 or more: elementary and junior high school students: ¥80, high school students: ¥250
*Free admission for elementary, junior high and high school students only on Saturdays
Group size Up to 100 people (may be split into several groups)
Estimated tour duration 60 mins

Location 300 Koubukuro, Iizuka City <http://www.city.iizuka.lg.jp/>
Opening Hours 9:30am - 5:00pm (last entry at 4:30pm)
Closed Wednesdays (open if a public holiday) and year-end/New Year holidays
Parking Available for large buses
Access Approx. 45 mins by car from Fukuoka IC on the Kyushu Expressway

Main Residence of the Kurauchi Family Who Prospered in the Chikuho Coalfields that Supported Japan

MAP 2-C Former Kurauchi Residence Chikujo Town

This is the main residence of the Kurauchi family, spanning three generations—Jirosaku, Yasufusa, and Jirobei, who built their wealth through coal and mining operations centered in the Chikuho region from the Meiji to Showa periods. Originally constructed in the mid-Meiji era, the house was expanded through the early Showa period to include a grand entrance and a tea room.



Visitors could enjoy the pond view from the grand hall and tea room



The interior decor offers a glimpse into the past

Learning Highlights

The entire property, including the garden, was designated a Place of Scenic Beauty in 2015. The estate's treasure house displays numerous valuable materials related to the Kurauchi family and coal mining operations, offering insight into the era's history.



The 12-tatami mat grand entrance and two 18-tatami mat halls impress with their scale, while the pillars and floorboards showcase exceptional craftsmanship

Admission fee Groups of 20 or more: elementary and junior high school students: ¥80, high school students: ¥250
Group size Up to 100 people (may be split into several groups)
Estimated tour duration 90 - 120 mins

Location 396 Kamifukano, Chikujo Town, Chikujo District TEL.0930-52-2530 <http://chikujo-rekishi.jp/>
Opening Hours 9:30am - 4:30pm (last entry at 4:00pm)
Closed Wednesdays (open if a public holiday) and year-end/New Year holidays
Parking Large buses (3 lots)
Access Approx. 10 mins by car from Tsuiki IC on the Higashi Kyushu Expressway

A Hub for Growth Industries Shaping the Future

Fukuoka Prefecture is a hub of next-generation industries where constant innovation drives progress. From advanced automotive manufacturing to pioneering robotics, visitors can witness Japan's world-renowned craftsmanship and technological excellence up close—an inspiring journey into the future of "monozukuri," the art of making things.

From Kyushu to the World: Producing Vehicles Crafted with Uncompromising Quality

MAP 1-B TOYOTA MOTOR KYUSHU PR Center Miyawaka City

TOYOTA MOTOR KYUSHU produces luxury Lexus vehicles, many of which are exported from Kyushu to approximately 80 countries and regions worldwide, including Asia, North America, and Europe. Through a factory tour, visitors can see firsthand how these vehicles are meticulously crafted with an uncompromising commitment to quality, ensuring complete satisfaction for customers around the globe.



Factory interior PR Center: Artisan Skills Experience Dojo



PR Center exterior

Learning Highlights

During the factory tour, visitors can see up close approximately 1,300 welding robots in the body shop working under computer control, as well as vehicles in the assembly line undergoing 1,800 inspection items before their engines are started for the first time. The PR Center, the starting point of the tour, features a hands-on dojo where visitors can experience the master craftsmanship behind Lexus' highest quality, exhibits highlighting the attention to detail in car production, a mini-theater showing the impressive production process on a large screen, and the latest Lexus models on display—perfect for commemorative photos.

Admission fee	Free	*Reservations are accepted on a first-come, first-served basis. Once capacity is reached, reservations will be closed.
Group size	Up to 50 people per session	※ Subject to bus capacity. ※ Multiple sessions may be booked per class. ※ Please refer to website for details.

Estimated tour duration
90 mins



PR Center interior

Location 1 Kamiaruki, Miyawaka City TEL.0949-34-2400 https://www.toyota-kyushu.com/plant_tour/
Opening Hours Weekdays 9:00am - 4:30pm
Closed Saturdays, Sundays, Golden Week, summer holidays, year-end/New Year holidays
Parking Large buses (7 lots)
Access 10 mins by car from Wakamiya IC on the Kyushu Expressway

Tour Japan's Largest Automobile Production Facility

MAP 1-C Nissan Motor Kyushu Kanda Town



Nissan Motor Kyushu, which began operations in 1975 as the first automobile production plant in Kyushu, is Nissan's largest domestic production site. Spanning approximately 2.36 million square meters, the facility includes multiple factories, a dedicated wharf, and a guest hall showcasing various vehicle models. With around 4,300 employees, the plant has the capacity to produce approximately 500,000 vehicles annually. Its convenient location on the Suo-nada coast allows newly manufactured cars to be shipped directly by sea. Vehicles that pass inspection are transported by truck or ship, reaching destinations across Japan and around the world.



Staff at the Guest Hall provide guided access to the dedicated factory tour route. Please note that photography, video recording, and eating or drinking are not permitted during the tour

Learning Highlights

Nissan Motor Kyushu is one of the world's most advanced factories. On the tour, visitors can follow the complete production process—from welding steel plates into car bodies, to assembling parts, and conducting repeated driving inspections—seeing how a vehicle comes together step by step. Highlights include automated robot operations and a flexible, precise production line. Visitors can experience firsthand Nissan's technical expertise and human ingenuity, as well as the advanced technology that makes Japan's automotive industry a global leader.

Admission fee	Free	Group size	Up to 60 people	Estimated tour duration	100 mins
---------------	------	------------	-----------------	-------------------------	-----------------

Location 1-3 Shinhamacho, Kanda Town, Miyako District
TEL.093-435-1137 http://www.nissankyushu.co.jp/FACTORY_TOUR/index.html
Opening Hours Guest Hall opening hours: Weekdays 9:00am - 5:00pm
Closed Saturdays and Sundays **Parking** Large buses (9 lots)
Access Approx. 10 mins by car from Kanda Kitakyushu IC on the Tokyu Kyushu Expressway

A Showcase of Japan's Craftsmanship and Advanced Technology

MAP 1-C YASKAWA Innovation Center Kitakyushu City

Yaskawa Electric, a world-leading innovator in mechatronics that has significantly advanced machinery worldwide, showcases the appeal of manufacturing and the latest robotics technology. This facility offers exhibitions, hands-on experiences, and learning opportunities for schools, research institutions, and the local community.

Learning Highlights

Discover the impressive capabilities of industrial robots making a global impact

Explore the world of manufacturing that Yaskawa Electric has perfected over 100 years through interactive exhibits and videos. Spread across three floors, each with a unique theme, visitors can experience the excitement and ingenuity of manufacturing powered by world-class servo motors, inverters, and industrial robots.



Location 2-1 Kurosakishiroishi, Yahatanishi Ward, Kitakyushu City TEL.093-645-7705
Tour information: Reservations are required. Please check the website for details. <https://www.Yaskawa.co.jp/company/tour>

A Science Museum in Fukuoka that Inspires the Future by Fostering the Exchange of Science and Creativity

MAP Fukuoka City Center MAP Fukuoka City

In the main exhibition, "Robo Square," visitors can explore the three key elements of robots—sensing, thinking, and moving. Learn how AI works, engage with programming concepts and creative problem-solving.

Learning Highlights

Enjoy hands-on exhibits focusing on "Space," "Environment," "Everyday Life," and "Future," inspiring reflection on life and the possibilities ahead, complemented by a science show featuring various scientific experiments.



Admission fee	(Group) Basic Exhibition (high school students: ¥280 / elementary and junior high school students: ¥180) Dome Theater (high school students: ¥280 yen / elementary and junior high school students: ¥180)	Group size	Museum: Up to 500 people Dome Theater: Up to 210 people (School groups must register in advance using the designated form)	Estimated tour duration	30 - 60 mins
---------------	---	------------	--	-------------------------	---------------------

Location 4-2-1 Ropponmatsu, Chuo Ward, Fukuoka City TEL.092-731-2525 <http://www.fukuokacity-kagakukan.jp> **Opening Hours** 9:30am - 9:30pm, Main Exhibition until 6:00pm
Closed Tuesdays (or the following day if Monday is a public holiday), December 28 - January 1 *Open every day during spring vacation, Golden Week, summer and winter vacation
Parking None **Access** A short walk from Ropponmatsu Station Exit three (Science Museum) on the Nanakuma Subway Line

Discover the Fascinating World of Science through the Theme of "Earth"

MAP 3-B Fukuoka Science Museum Kurume City

This science museum, themed around the Earth, features the Cosmo Theater (planetarium), where visitors can enjoy a 23 meters dome showcasing the night sky. It combines an optical planetarium with a full-dome digital projection system in a hybrid setup, offering stunning visuals and immersive experiences. Expert guides make learning about astronomy engaging and enjoyable.

Learning Highlights

Explore five permanent exhibition areas—"Space," "Fundamental Science," "Advanced Science & Technology," "Robots & Engineering," and "Nature & Environment"—through hands-on exhibits. Enjoy daily science shows led by instructors, including dynamic electricity demonstrations, for an engaging learning experience.

Admission fee	Exhibition (ages four - high school) ¥160 for 30+ visitors, ¥210 for under 30 Cosmo Theater (ages four - high school) ¥210 for 30+ visitors, ¥310 for under 30	Group size	Exhibition Hall: approx. 200 people per group Cosmo Theater: Learning; Projection: up to 230 people / General Projection: Up to 130 people	Estimated tour duration	Exhibition Hall: Approx. 1 hour Cosmo Theater: 40 mins
---------------	---	------------	---	-------------------------	---

Location 1713 Higashikushihara-machi, Kurume City TEL.0942-37-5566 <http://www.science.pref.fukuoka.jp/>
Opening Hours 9:30am - 4:30pm *open until 5:00pm on Saturdays, Sundays, and holidays (last entry 30 mins before closing)
Closed Mondays (for the following day if Monday is a public holiday), museum maintenance days (approximately one - two days per month), year-end/New Year holidays. *Opening hours and closing days are subject to change. Please check the Science Museum website.
Parking Large buses (10 lots) **Access** 10 mins by car from Kurume IC on the Kyushu Expressway

Discover and Experience the Wonders of Science at this Science Museum

MAP 1-C SPACE LABO (KITAKYUSHU CITY SCIENCE MUSEUM) Kitakyushu City

This facility is designed to nurture scientific thinking in children by encouraging "discovery, observation, and exploration" through science and technology, including the largest tornado simulator in Japan. The world's most advanced planetarium and the largest in Japan, is a must-see attraction.

Learning Highlights

The official SPACE LABO website offers learning plans tailored by grade and subject, making it easy to integrate the museum's permanent exhibits and facilities into classroom lessons. It also provides worksheets and resources that support both pre- and post-visit learning, helping educators deepen students' understanding and extend lessons beyond the museum experience.

Admission fee	(Group Rates) Permanent Exhibition (junior high school students: ¥240 / elementary school students: ¥160) Planetarium (junior high school students: ¥240 / elementary school students: ¥160)	Group size	Permanent Exhibition: 180 people Planetarium: 250 people	Estimated tour duration	Permanent Exhibition: 60 mins Planetarium: 45 mins
---------------	--	------------	---	-------------------------	---

Location 4-1-1 Higashida, Yahatahigashi Ward, Kitakyushu City TEL.093-671-4566 <https://kitakyushuspacelabo.jp> Advance reservations made via the website are given priority
Opening Hours 10:00am - 6:00pm (last entry at 5:30pm) **Closed** Closed during the year-end/New Year holidays and for maintenance
Parking Bus parking available **Access** Approx. 5 mins by car from Edamitsu IC on the Kitakyushu Urban Expressway

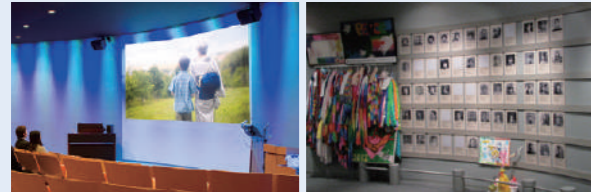


CHIKUZENMACHI TACHIARAI PEACE MEMORIAL MUSEUM preserves the memories of the tragedies of war that Japan once experienced. Reflect on the hearts of young people who went to defend their homeland, and learn about the value of life and the importance of peace.

An Informative Hub Conveying the Importance of Peace Through the History of Tachiarai Airfield

MAP 3-B CHIKUZENMACHI TACHIARAI PEACE MEMORIAL MUSEUM Chikuzen Town

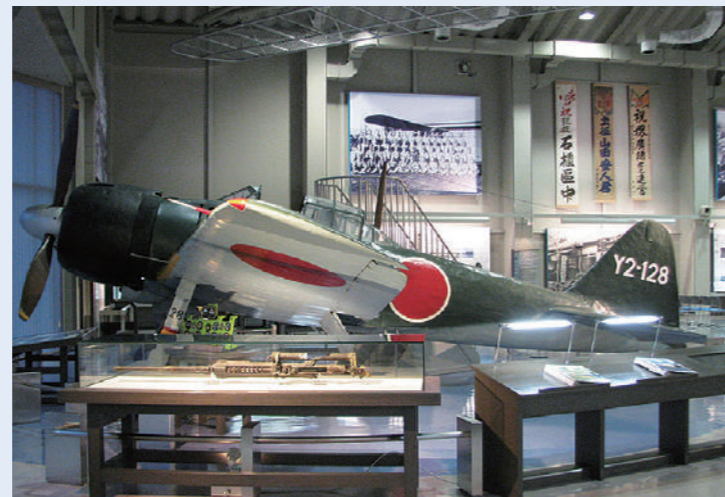
The museum stands on the site of the former Tachiarai Army Airfield, once hailed as the largest in East Asia, and the Tachiarai Army Flight School, where fighter pilots were trained. This area, which developed as a military town, suffered devastating damage during the 1945 air raids. Visitors can explore historical materials from that time and reflect on the importance of peace.



Learning Highlights

Relay Base for Kamikaze Pilots on Missions

The museum highlights the history of Tachiarai Airfield and its related facilities, including materials about the March 1945 air raids, to emphasize the importance of peace. Inside, visitors can see actual aircraft, including the world's only surviving Type 97 fighter and a Mitsubishi Zero Model 32, and video presentations on the airfield's history.



The Mitsubishi Zero Model 32, discovered in the Marshall Islands in 1978 and later returned to Japan, is a combat-used aircraft showing bullet marks, with the cockpit open for viewing. The museum's new wing, opened in April 2017, features a 200-seat multipurpose hall and an exhibition that explores kamikaze missions in detail.

Learning the Value of Peace Through Artifacts That Reveal the Realities of War

Exhibition Highlights



Through personal testimonies and authentic exhibits, the museum conveys the role and history of the Tachiarai Airfield, which served as an important base for the Imperial Japanese Army Air Force from 1919 (Taisho eight) to 1945 (Showa 20).



This Type 97 Fighter was recovered from Hakata Bay in 1996 (Heisei eight). It made an emergency landing there after experiencing engine trouble while en route to Chiran for a kamikaze mission.

Kamikaze Exhibit Room

The new wing features extensive exhibits on the Special Attack Units (kamikaze), offering visitors an in-depth understanding of their history. The main building's "Story Room" offers film screenings and readings, along with a space to honor and commemorate the war's victims.

Admission fee Groups of more than 15 people / elementary and junior high school students: ¥300, high school students: ¥400 **Group size** Up to 600 people (New Building / Multipurpose Room accommodates 200 people) **Estimated tour duration** 45 - 90 mins

Location 2561-1 Takata, Chikuzen Town, Asakura District TEL.0946-23-1227 <http://tachiarai-heiwa.jp/> **Opening Hours** 9:00am - 5:00pm **Closed** December 26 - 31 **Parking** Large buses (8 lots) **Access** Approx. 15 mins by car from Chikugo-Ogori IC on the Oita Expressway

An Interactive Museum that Brings Pre-War and Post-War Life in Japan to Life

MAP 1-C Kitakyushu City Museum of Peace Kitakyushu City

The first intended target of the atomic bomb dropped on Nagasaki was the Kokura Army Arsenal. Built on the site of this former arsenal, the Kitakyushu City Museum of Peace presents the city's history from pre-war development through the war, air raids, and post-war reconstruction. Through historical materials and wartime testimonies, the museum encourages reflection on the tragedies of war, the importance of peace, and the value of life.

Learning Highlights

The museum features numerous authentic artifacts depicting daily life during the war, complemented by modern audio-visual displays. Visitors can see models of balloon bombs and incendiary bombs, and experience wartime life through hands-on exhibits such as air-raid hoods and rice pounding. Nearly 80 years after the war, the museum provides an opportunity to reflect on the importance of peace as memories of the conflict gradually fade.

Admission fee (Group) Elementary school students: ¥40, middle school and high school students: ¥80 *Groups are defined as groups of 30 or more paying guests. **Group size** Please inquire **Estimated tour duration** 60 mins

Location 4-10 Jonai, Kokurakita Ward, Kitakyushu City (within Katsuyama Park) TEL.093-592-9300 <https://kitakyushu-peacemuseum.jp/> **Opening Hours** 9:30am - 6:00pm (last entry at 5:30pm) **Closed** Mondays (Tuesday if Monday is a public holiday), year-end/New Year holidays **Parking** No on-site parking is available. Please use the adjacent city parking lots. **Access** Approx. 2 mins by car from Katsuyama IC on the Kitakyushu Urban Expressway



Fukuoka Prefecture is home to a rich variety of traditional crafts such as textiles, pottery, dyeing, and more, shaped by its history and natural environment. Visitors can observe skilled artisans at work, preserving these techniques and passing them on to future generations.

Explore the History and Culture of Hakata Up Close

MAP Fukuoka City Center MAP Hakata Machiya Folk Museum Fukuoka City

Step inside Meiji era townhouses, carefully relocated and restored, to watch live Hakata-ori weaving demonstrations. In the exhibition hall, enjoy daily traditional craft demonstrations and videos of the Hakata Gion Yamakasa festival, and hands-on Hakata doll painting.



The facility consists of three buildings: the exhibition hall on the right, followed by the Meiji era townhouse and the gift shop.

Learning Highlights

This cultural and tourist facility showcases daily life, culture, and festivals in Hakata, primarily from the Meiji and Taisho periods. Watching live Hakata-ori weaving demonstrations inside the buildings offers a glimpse into the skill and dedication of artisans preserving these traditional crafts.

Admission fee Free for elementary and junior high school students ¥200 for high school students and adults (¥150 for groups of 20 or more) **Group size** Up to 100 people **Estimated tour duration** 40 mins

Location 6-10 Reisen-machi, Hakata Ward, Fukuoka City TEL.092-281-7761 <https://www.hakatamachiya.com/> **Opening Hours** 10:00am - 6:00pm (last entry to the exhibition hall at 5:30pm) **Closed** Fourth Monday of every month (or the following weekday if it is a public holiday), December 29 - 31 **Parking** Large buses (3 lots) (Kushida Shrine, reservations not accepted) **Access** Approx. 10 mins by car from the Chiyo Exit of the Fukuoka Urban Expressway

Explore Yame's Well-Preserved Traditional Crafts

MAP 4-B Yame Traditional Crafts Museum Yame City

Explore masterful Edo period crafts like Buddhist altars, lanterns, and hand-made Japanese paper at the Traditional Crafts Center, which also houses a Folk Museum, a Japanese Paper Museum, and a Tourism and Products Center.



A replica of the float from the 270-year-old Karakuri puppet theater, "Yame Fukushima Lantern Dolls."

Learning Highlights

See the "Yame Fukushima Lantern Dolls" float at the Folk Museum and try making postcards, business cards, or fans at the Japanese Paper Museum (from ¥600, reservation required).

Admission fee Free **Group size** Up to 80 people (tour only) **Estimated tour duration** 60 - 90 mins

Location 2-123-2 Moto-machi, Yame City TEL.0943-22-3131 <https://yamedentokougoukan.jimdo.com> **Opening Hours** 9:00am - 5:00pm **Closed** Mondays, year-end/New Year holidays **Parking** Large buses (6 lots) **Access** Approx. 10 mins by car from Yame IC on the Kyushu Expressway

Renowned Traditional Crafts of the Kurume Region All in One Place

MAP 3-B Jibasan Kurume Kurume City

The exhibition and sales area features traditional crafts such as Kurume Kasuri textiles and Rantai lacquerware, as well as regional specialties from the Chikugo area, including famous sweets and tonkotsu ramen-offering plenty to see and enjoy.



Find extensive exhibits on Kurume Kasuri, along with a showcase of Chikugo's regional products for display and sale.

Learning Highlights

The Kurume Kasuri Museum displays tools, panels showing the weaving process, and items favored by Inoue Den, who developed Kurume Kasuri. Visitors can watch hand-weaving demonstrations and even try weaving themselves (finished pieces cannot be taken home).

Admission fee Free **Group size** Up to 40 people **Estimated tour duration** 20 - 60 mins

Location 5-8-5 Higashiaikawa, Kurume City TEL.0942-44-3700 <http://www.jibasankurume.jp> **Opening Hours** 10:00am - 5:00pm **Closed** Year-end/New Year holidays **Parking** Large bus (1 lot) **Access** Approx. 3 mins by car from Kurume IC on the Kyushu Expressway

Traditional Fukuoka Pottery

MAP 3-C Koishiwara Ceramics Museum Toho Village

Representing Fukuoka Prefecture, Koishiwara-yaki pottery is a style of pottery that combines practicality with beauty. With a history of around 350 years, it was the first Japanese ceramic designated as a traditional craft. Its distinctive geometric patterns are a hallmark of this celebrated pottery.



Learning Highlights

Learn about Toho Village, watch videos on the making of Koishiwara-yaki pottery, and explore the exhibition hall and climbing kiln. For an additional fee, visitors can also watch a potter's wheel demonstration or participate in a hands-on pottery experience.

Admission fee Free **Group size** Up to 80 people (tour only) **Estimated tour duration** 60 - 90 mins

Location 730-9 Oaza Koishiwara, Toho Village, Asakura District TEL.0946-74-2266 <https://densan2266part1.jimdo.com/> **Opening Hours** 9:30am - 5:00pm **Closed** Tuesdays (or the following day if Tuesday is a public holiday) **Parking** Large buses (10 lots) **Access** Approx. 30 mins by car from Haki IC on the Oita Expressway

Inspire Reflection on the Environment and the SDGs

MAP 1-C Takamiya Environment Museum Kitakyushu City

The museum is organized into six zones, allowing visitors to explore environmental and energy issues comprehensively, including Kitakyushu's history of overcoming pollution. The building itself is also notable for its use of natural and recycled materials.



Hands-on activities with recycled materials and eco-themed games deepen understanding of global environmental issues.

Learning Highlights

Learn about Local Environmental Issues through Hands-On Experiences

The museum showcases Kitakyushu's history of overcoming pollution and its ongoing environmental initiatives. Workshops led by local volunteers, including eco-crafts and games, provide hands-on experiences that deepen understanding of current environmental issues, from climate change and fossil fuel depletion to desertification and food security.



Experience the history of Kitakyushu, a city advancing attractive urban development as an SDGs Future City.

Admission fee	Free admission (for gallery viewing)	Group size	By reservation only: 60 junior/senior high school students, 90 elementary school students	Estimated tour duration	80 mins
Location	2-2-6 Higashida, Yahatahigashi Ward, Kitakyushu City TEL.093-663-6751 https://virtual-eco-museum.com/				
Opening Hours	By reservation only - A: 9:00am-10:30am B: 10:30am-12:00pm C: 1:30pm-3:00pm D: 3:00pm-4:30pm				
Closed	Mondays (or the following day if Monday is a public holiday), year-end/New Year holidays				
Parking	Large buses (30 lots) Access Approx. 5 mins by car from the Otani or Edamitsu exit of the Kitakyushu Urban Expressway				

Explore Global Warming through Everyday Issues like Household Waste and Discover Fukuoka City's 3R Initiatives

MAP 2-A Fukuoka City Seibu 3R Station Fukuoka City



Creative works made from reused materials

The center shares information on waste reduction and recycling, offering hands-on 3R workshops and practical courses to encourage participation in eco-friendly initiatives.

MAP 2-B Fukuoka City Rinkai 3R Station Fukuoka City



Entrance on the second

A facility where visitors learn about and engage with environmental issues through everyday themes. Explore the section providing collected used products, try easy paper-making experiences, and learn the 3Rs through hands-on activities, reflection, and practice.



Learning Highlights

Sparking Interest in Environmental Issues

The 3Rs stand for Reduce (cutting waste), Reuse (reusing items), and Recycle (reprocessing resources). At the 3R Station, visitors can explore, learn, and experience the 3Rs, providing opportunities to reflect on environmental issues.

Admission fee	Free	Group size	Up to 100 people (split into multiple sessions)	Estimated tour duration	30 mins
Location	1043-2 Imajuku Aoki, Nishi Ward, Fukuoka City TEL.092-882-3190 http://www.fukuoka-seibuplaza.com/				
Opening Hours	Activity hours: 10:00am - 4:00pm				
Closed	Mondays (or the following day if Monday is a public holiday), year-end/New Year holidays				
Parking	Large buses (2 lots)				
Access	Approx. 5 mins by car from the Fukushige Exit of the Fukuoka Urban Expressway				

Admission fee	Free	Group size	Up to 100 people (split into multiple sessions)	Estimated tour duration	30 mins
Location	4-13-42 Hakozakifuto, Higashi Ward, Fukuoka City Clean Park Rinkai TEL.092-642-4641 https://rinkai3r-station.com/				
Opening Hours	Activity hours: 10:00am - 3:00pm				
Closed	Mondays (or the following day if Monday is a public holiday), year-end/New Year holidays				
Parking	Large buses (5 lots)				
Access	A short drive from the Kaizuka Exit on the Fukuoka Urban Expressway				

Explore environmental issues in a fun and enjoyable way, with opportunities to think, play and take action. Access a variety of facilities, from the Takamiya Environment Museum, which utilizes solar energy, to Fukuoka City's 3R Station, which actively promotes recycling.

Learn about Current Recycling Practices and Reflection a Sustainable Future

MAP 1-C Kitakyushu Eco Town Center Kitakyushu City

Kitakyushu City and Omuta City are leading eco town initiatives. In Kitakyushu City, the "Kitakyushu Eco-Town Center" serves as a hub for visiting recycling plants and renewable energy facilities, including wind power. In Omuta City, the "Omuta City Ecosanc Center" offers hands-on experiences to learn about the environment and recycling.

Learning Highlights

Hands-On Environmental Learning Experiences at Kitakyushu and Omuta Eco Towns

At Kitakyushu Eco-Town, home to a cluster of recycling plants, visitors can learn how waste is transformed into valuable resources. At Omuta City Ecosanc Center, which integrates a community learning center with an industrial support center, hands-on experiences such as workshops using recycled materials and nature observation programs, help foster awareness of the environment and recycling.

MAP 4-B Omuta City Omuta Eco Town Omuta City



Admission fee	Free (Factory tour materials fee: ¥50 for elementary and junior high school students, ¥100 for high school students and above) *Free for Kitakyushu City residents	Group size	Up to 200 people (please inquire for larger groups)	Estimated tour duration	60 - 90 mins
Location	10-20 Koyo-machi, Wakamatsu Ward, Kitakyushu City TEL.093-752-2881 http://www.kitakyushu-ecotown.com/				
Opening Hours	9:00am - 5:00pm Closed Sundays, public holidays, year-end/New Year holidays				
Parking	Large buses (8 lots) Access Approx. 10 mins by car from the Wakato Exit of the Kitakyushu Urban Expressway				

Admission fee	Free	Group size	Up to 100 people	Estimated tour duration	60 - 90 mins
Location	461 Kenro-machi, Omuta City TEL.0944-41-2735 http://www.ecosanc.com/				
Opening Hours	9:00am - 5:00pm Closed Mondays (or the following day if Monday is a public holiday), December 29 - January 3				
Parking	Large buses (5 lots) Access Approx. 20 mins by car from Nankan IC on the Kyushu Expressway				

*For reservations, please refer to the website: <https://www.kitakyushu-ecotown.com/tour/>

Discover Everyday Eco Practices in a Town Promoting Circular Living

MAP 3-B Oki Circulation Center "Kururun" Oki Town

Located in the heart of Oki Town, this facility highlights biomass systems and promotes a resource-circulating society. Through the town's "Mottainai Declaration" initiatives, visitors can deepen their environmental awareness.

Learning Highlights

Food Waste → Liquid Fertilizer → Vegetables → School Meals.

Keyword: "Circulation"

Unlike conventional waste treatment facilities, this center transforms food waste and other organic materials into biomass resources, such as energy and liquid fertilizer, for local reuse. As a hub for "circular town development," it offers opportunities to learn about a circular society and the natural environment. Adjacent to the facility, a roadside station provides local produce and serves as a space where residents can relax and gather.



Admission fee	Tour fee: ¥3,000 + ¥500 yen per person Reservations required at least two weeks in advance	Group size	1- 45 people (two groups, 10:00am and 1:30pm)	Estimated tour duration	90 mins
Location	1331-1 Oaza Yokomizo, Oki Town, Mizuma District TEL.0944-33-1231 https://www.ooki-junkan.jp/				
Opening Hours	9:00am - 4:00pm Closed Sundays and year-end/New Year holidays (Tours are held Monday - Friday, excluding public holidays)				
Parking	Large buses (6 lots at adjacent roadside parking space) Access Approx. 15 mins by car from Yame IC on the Kyushu Expressway				

A Paradise for Living Creatures Nurtured by Vibrant Ecosystem

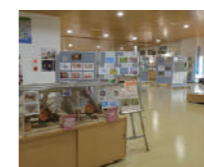
MAP 1-C Kitakyushu City Hibikinada Biotope Kitakyushu City

The Hibikinada Biotope, one of Japan's largest, was formed from landfill areas that evolved into wetlands, freshwater ponds, and grasslands, fostering diverse wildlife. Developed by Kitakyushu City as a hub for environmental education, it is home to a wide variety of living creatures.

Learning Highlights

Experience "Biodiversity" with all five senses and support local nature conservation

In the wetlands, where reeds and aquatic plants flourish, visitors can spot waterfowl and hear their cheerful calls. Japanese rice fish swim in the waters below. This is a rare place where the diversity of life can be experienced firsthand, with various species living together in different natural habitats. It also offers an opportunity to reflect on what can be done to preserve a rich natural environment for future generations.



A biotope refers to the habitat of a group of organisms.

Admission fee	Groups of 30 or more: Free for elementary and junior high students, ¥70 per high school student and above	Group size	Up to 80 people	Estimated tour duration	90 mins
Location	1-126-1 Hibiki-machi, Wakamatsu Ward, Kitakyushu City TEL.093-751-2023 http://www.hibikinadabiotope.com/				
Opening Hours	9:00am - 5:00pm Closed Tuesday (or the following day if Tuesday is a public holiday), year-end/New Year holidays				
Parking	Large buses (10 lots) Access Approx. 10 mins by car from the Wakato Exit of the Kitakyushu Tunnel				

Let's take a stroll around Fukuoka!

Recommended for group independent study (fieldwork)!

Fukuoka City Hakata Area

The gateway to Fukuoka Prefecture, bustling with Shinkansen and express buses. Home to offices and major commercial complexes.



Photo: JR HAKATA CITY



Photo: KITTE HAKATA

Centered around JR Hakata Station, where both Shinkansen and conventional trains operate, this area is home to many offices. The area features numerous shops offering Fukuoka souvenirs and a diverse range of dining options. Directly connected to the Fukuoka City Subway, JR Hakata Station provides easy access to other parts of the city. Large commercial complexes, including JR HAKATA CITY and KITTE HAKATA, make this area perfect for shopping.

- MAP** Fukuoka City Center Map **JR HAKATA CITY**
Location 1-1 Hakata Station Chuo Street, Hakata Ward, Fukuoka City TEL.092-431-8484 **Opening Hours** 10:00am - 8:00pm
Closed Closed on New Year's Day and one variable annual holiday
Access Direct access from JR Hakata Station
- MAP** Fukuoka City Center Map **KITTE HAKATA**
Location 9-1 Hakata Station Chuo Street, Hakata Ward, Fukuoka City TEL.092-292-1263
Opening Hours 7:00am - 12:00am (hours vary by store)
Closed Third Tuesday of June
Access Direct access from JR Hakata Station

Fukuoka City Tenjin Area

Kyushu's largest bustling shopping district, packed with trendy, unique shops, cafés, and department stores

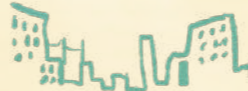


Photo: Fukuoka City



The Tenjin Area is lined with fashion buildings and shops, where trendy restaurants and cafés are constantly opening, keeping the area vibrant and full of new experiences. Just a 5 mins subway ride from Hakata Station, it is also conveniently served by buses, including the "Fukuoka City ¥150 Zone," covering Hakata and Tenjin, making it easy to explore and get around.



Tenjin Underground Mall

With direct access from Tenjin Subway Station, Tenjin Underground Mall houses around 150 shops

Fukuoka City Momochi Area

An area gaining attention as the face of next-generation Fukuoka, where new amusement and entertainment spots continue to emerge.

Near MIZUHO PayPay Dome Fukuoka, a landmark in the Momochi area with views of Fukuoka Tower, two new attractions have emerged. "BOSS E · ZO FUKUOKA," opened in July 2020, offers breathtaking rides and interactive, state-of-the-art museums. "MARK IS fukuoka-momochi," the largest commercial complex in Fukuoka City, features apparel shops, restaurants, a cinema, and a live performance venue. Momochi is a vibrant area where visitors can experience the latest in amusement and entertainment.

- BOSS E · ZO FUKUOKA**
Location 2-2-6 Jigyohama, Chuo Ward, Fukuoka City TEL.092-947-1884(Fukuoka SoftBank Hawks Corp. Public Relations Office)
Opening Hours Weekdays 11:00am - 10:00pm
 Weekends and holidays 10:00 am - 10:00 pm
 *Hours may vary depending on the dome event.
 *Please check the official website before visiting.
Closed No fixed days
Access 12 mins on foot from Tojinmachi Station on the Fukuoka Municipal Subway
 5 mins from Nishikoen IC on the Urban Expressway
- MARK IS fukuoka-momochi**
Location 2-2-1 Jigyohama, Chuo Ward, Fukuoka City TEL.092-407-1345(MARK IS fukuoka-momochi main contact)
Opening Hours Shops, Services, Food, Cafe, Food Court: 10:00am - 9:00pm
 Restaurants: 11:00am - 9:00pm
 (Please check the facility website for details)
 Parking and bicycle parking hours: 8:00am - 1:00am
Closed No fixed days
Access Approx. 10 mins on foot from Tojinmachi Station on the Fukuoka Municipal Subway



Photo: Fukuoka SoftBank Hawks Corp.



Photo: Mitsubishi Jisho Property Management Co., Ltd.

Fukuoka Prefecture offers a wealth of unique walking spots. In Fukuoka City, the Hakata and Tenjin areas continually attract visitors with the latest in fashion and culture. The port town of Mojiko retains the retro charm of the Meiji and Taisho eras, while the scenic castle town of Yanagawa, known for its waterways, exudes historic charm. These diverse areas are also ideal for independent learning.

Kitakyushu City Kokura Area

An area preserving the historic Kokura Castle and the charm of its castle town.



In the early Edo period, Kokura, as Kyushu's gateway, flourished as a center of politics and commerce. Today, Kokura Castle stands as a town symbol, offering a glimpse into its rich history. Nearby, Tanga Market, with over 120 shops, buzzes with activity, offering locally grown vegetables, fresh seafood, and traditional foods.

- MAP** 1-C Kokura Castle
Location 2-1 Jonai, Kokurakita Ward, Kitakyushu City TEL.093-561-1210 <https://www.kokura-castle.jp>
Opening Hours April - October: 9:00am - 8:00pm, November - March 9:00am - 7:00pm
 *Hours may vary depending on the day.
Closed None **Parking** Large buses (13 lots)
Access Approx. 5 mins by car from the Otemachi exit of the Kitakyushu Urban Expressway

Yanagawa City Yanagawa Area

Yanagawa, a castle town that has produced many literary figures, offers scenic donko boat rides cruising along the canals.



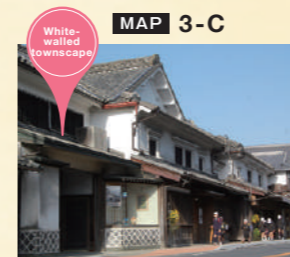
Viewing the town from a boat reveals the ingenuity of those who created the canals and the history behind them. Surrounded by this timeless scenery, visitors gain a deeper appreciation for the importance of living in harmony with water.



Learn about Kitahara Hakushu and his achievements, a poet of the Meiji to Showa periods renowned in modern Japanese literature, through his works, personal artifacts, and school songs.

Ukiha City Ukiha Area

Stroll through Chikugo-Yoshii, a post town that flourished during the Edo period.



In the heart of Ukiha City, Chikugo-Yoshii preserves buildings from the Edo to Meiji periods. The area is lined with charming shops, including traditional confectioneries and soy sauce stores, as well as boutiques featuring local artisans' works and cafés serving drinks and desserts made with Ukiha's fruits. Beyond the town, the terraced fields of the surrounding mountains display changing seasonal landscapes throughout the year.

Kitakyushu City Mojiko Retro

A historic port town with Western influences and a charming retro vibe.



Mojiko is a scenic tourist destination, featuring modern buildings and retro streets that evoke a European atmosphere. Enjoy restaurants and cafés with sea views, alongside shops selling souvenirs and seafood. Many eating places that offer "Yaki Curry", the local specialty, are welcoming you. "Kanmon Tunnel Pedestrian Walkway", which allows visitors to walk across Kanmon Strait, is located just about 8 mins drive from Mojiko Station.

- MAP** 1-C Mojiko Retro
Location Mojiko Retro Area **Opening Hours** Vary by facility
Closed Vary by facility
Parking Next to Minato House - large buses (12 lots)
 Next to Kanmon Strait Museum - large buses (20 lots)
Access Approx. 8 mins by car from Moji IC on the Kyushu Expressway

Yame City Yame Area



- MAP** 4-B Yanagawa Canal Punt Tour
Location Yanagawa City TEL.0944-74-0891 (Yanagawa City Tourist Information Center) <http://www.yanagawa-net.com/>
Opening Hours 9:00am - sunset **Closed** None
Parking Available for large buses (please inquire)
Access Approx. 25 mins by car from Miyama Yanagawa IC on the Kyushu Expressway

- MAP** 4-B Kitahara Hakushu's Parents' Home and Museum
Admission fee Adults ¥600, children (elementary and junior high school students) ¥250, students (high school and university students) ¥450
 Groups of 20 or more: Adults ¥550, children (elementary and junior high school students) ¥200, students (high school and university students) ¥400
Group size Up to 200 people
Location 55-1 Okinohata-machi, Yanagawa City TEL.0944-72-6773
Opening Hours 9:00am - 5:00pm (last entry at 4:30pm)
Closed Year-end/New Year holidays **Parking** None
Access Approx. 30 mins by car from Miyama Yanagawa IC on the Kyushu Expressway

Yame City Yame Area

Walk along the white-walled streets of Yame, a town renowned for its traditional crafts.



Yame preserves traditional crafts such as hand-made washi paper and lanterns, keeping Edo period artisan skills alive. In Yame-Fukushima, around 130 buildings from the Edo to early Showa periods line the streets, hosting long-established tea shops and artisan workshops. Known as a production area for Yame tea, the surrounding region is dotted with numerous tea fields.





Connect with Nature!

Nature experiences provide students with valuable opportunities to engage their senses, deepen environmental awareness, and enhance thinking, decision-making, and expressive skills, serving as an important component for promoting active and collaborative learning.

Learning Highlights

Take on Fukuoka's Rich Natural Landscapes!

In Fukuoka Prefecture, facilities such as "Forest Adventure" offer programs that allow visitors to connect with nature while being in urban areas. A wide variety of activities can be enjoyed by people of all ages.

Enjoy Stunning Views! Refresh Your Mind and Body.

MAP 2-B Forest Adventure HISAYAMA

Hisayama Town

Welcome to "Adventure Valley FUKUOKA," an urban adventure park! The "Trek Course," is open to first graders and above (minimum height 110 cm). Enjoy unlimited access to 72 diverse activities across ten sites! Sites vary in difficulty, making the park fun for both children and adults. It is easily accessible, about 30 mins by car or bus from central Fukuoka's Hakata Station and Tenjin area, and 20-30 mins by car from popular tourist destinations like Dazaifu Tenmangu Shrine, MARINE WORLD uminonakamichi, and Fukuoka Tower.



Admission fee	Trekking course (60 mins plan: ¥3,000, 90 mins plan: ¥4,000, 120 mins plan: ¥5,000)	Estimated tour duration	Approx. 1.5 - 2.5 hours *depending on the plan
Group size	200 people (100 per morning and afternoon session)		
Location	1226-1 Tsukazaki, Yamada, Hisayama Town, Kasuya District TEL.090-1361-1380 https://forest-adventure.jp/park/fa-hisayama/		
Opening Hours	9:00am - 5:00pm Closed Open year-round		
Parking	Large buses (5 lots), cars (60 lots) free parking		
Access	*Approx. 25 mins (17 km) from Hakata Station via expressway *Approx. 20 mins (12 km) from Hakata or Tenjin Station via local roads About 50 mins by shuttle bus from Tenjin Station to the TORIUS Hisayama shopping complex		

Awaken Your Spirit of Adventure - Connect with Nature through Immersive Experiences!

MAP 2-C Forest Adventure SOEDA

Soeda Town

Nestled in lush nature, this adventure park offers a wide range of outdoor activities for visitors of all ages. The surrounding natural environment provides year-round enjoyment, from hiking to playing in the river, making it perfect for a full day outdoors. Adding to the adventure, visitors reach the forest by walking along a disused railway track. The park is also the first officially designated Fukuoka One Health Awareness Facility, where guests can learn about and experience the concept of "One Health" — the interconnection between people, animals, and the environment.



Highlights within Forest Adventure SOEDA:

- Forest Biotope: Explore a natural wetland teeming with life.
- Forest Osakana-kan: Observe freshwater fish raised in aquariums that draw water directly from the park's river.
- Forest Farm: Meet adorable Tokara goats and fascinating birds up close.

Admission fee	Canopy Course: ¥3,000 (¥2,700 for groups of 8 or more) Add ¥500 for optional One Health training	Estimated tour duration	Canopy Course 60 - 90 mins
Group size	200 people (100 per morning and afternoon session)		
Location	1288-3 Noda, Soeda Town, Tagawa District TEL.080-3975-4010 https://forest-adventure.jp/park/fa-soeda/		
Opening Hours	9:00am - 5:00pm Closed No fixed rest days. Please inquire		
Parking	Large buses (4 lots)		
Access	Approx. 50 mins by car from Kokuraminami IC		

An Urban Oasis for an Extraordinary Experience!

MAP 2-A Forest Adventure ABURAYAMA FUKUOKA

Fukuoka City

Just 30 mins by car from Fukuoka City, this adventure park in the forests of Mount Aburayama features an extensive network of box nets with endless ways to play. The Zip Trip course offers thrilling rides with panoramic views of Fukuoka City, combining excitement with breathtaking scenery.



Admission fee	• Net Course from ¥2,200 • Zip Trip Course from ¥2,750 • Net Course + Zip Trip Course from ¥4,400	Estimated tour duration	• Net Course: 1 hour • Zip Trip Course: 30 mins - 1 hour *Experience time may vary depending on number of participants
Group size	200 people (100 per morning and afternoon session)		
Location	710-2 Kashiwara, Minami Ward, Fukuoka City (inside Aburayama Fukuoka) TEL.080-3965-6120 https://forest-adventure.jp/park/fa-abyfukuoka/		
Opening Hours	9:30am - 5:00pm (subject to seasonal changes)		
Closed	First and third Wednesday (or the next Wednesday if it falls on a holiday) *follows Aburayama rest days		
Parking	Available. Reservations required — please inquire once your visit date and number of vehicles are confirmed.		
Access	Approx. 20 mins from Tsutsumi IC (Fukuoka Urban Expressway). Set destination by address or "Aburayama Fukuoka".		

Take a Sky-High Walk Overlooking the Sea!

MAP 3-A Forest Adventure ITOSHIMA

Itoshima City

Forest Adventure ITOSHIMA is Kyushu's first adventure park. Set in the lush "Hyakuneno Mori" (Forest of a Hundred Years) at an elevation of 700 meters, the park offers unique outdoor experiences such as zip lines and other aerial adventures through the treetops.



Admission fee	¥4,400 (group reservation)	Estimated tour duration	2 - 3 hours *Duration varies based on group size.
Group size	100 people (50 per morning and afternoon session)		
Location	312-390 Ikisan, Nijo, Itoshima City (inside Hinokuchi Highland) TEL.080-5548-2070 https://forest-adventure.jp/park/fa-itoshima/		
Opening Hours	9:00am - 5:00pm (subject to seasonal changes)		
Closed	March - December (closed during winter in January and February)		
Parking	None for large or medium buses due to narrow access roads. Microbuses can pass and park.		
Access	From Fukuoka City: Nishikyushu Expressway, Maebaru IC - Shiraito Falls. From Maebaru IC to Forest Adventure ITOSHIMA, it takes approx. 30 mins.		

Pick Fresh Strawberries with Ease from Elevated Beds!

MAP 4-B Pu-san's Strawberry Farm

Yame City

At "Pu-san's Strawberry Farm," a multi-tiered elevated cultivation system is used, allowing strawberries to grow on both upper and lower levels. This setup makes strawberry picking enjoyable for all ages. The aisles are covered with protective sheets to keep footwear clean, and the paths are wide enough for wheelchair access. Discover strawberries growing on elevated beds and savor the taste of freshly picked, perfectly ripe fruit.

Location 600-3 Baba, Yame City
<https://gennousya.com/>

Opening Hours 9:30am - 4:00pm (January - May)
Closes when fruit runs out (last entry at 3:00pm)

Closed Monday (open if Monday is a holiday, then closed the following day)



Enjoy the Seaside!

Nestled between Hakata Bay and Genkainada, the park provides a serene space to unwind while engaging with nature and animals, sparking appreciation for wildlife and the environment.

Learning Highlights

Foster a Deeper Interest in Wildlife and Nature

MARINE WORLD uminonakamichi offers behind-the-scenes tours and caretaker talks to enhance understanding of marine life. Uminonakamichi Seaside Park encourages environmental awareness through outdoor activities and park clean-up efforts.

Aquarium Open for Exclusive After-Hours Evening Bookings

MAP 2-A MARINE WORLD uminonakamichi

Fukuoka City



The "Backstage Tour" offers guided access behind the scenes of the aquarium, addressing questions like "Where does the tank water come from?" and "What do the animals eat?", and offering a rare vantage point over the shark-filled main tank.



Admission fee	Elementary and junior high school students: ¥900 high school, university, and vocational school students: ¥1,500	Estimated tour duration	120 - 150 mins
Group size	No limit		

Location	18-28 Saitozaki, Higashi Ward, Fukuoka City TEL.092-603-0400 http://marine-world.jp/		
Opening Hours	9:30am - 5:30pm (may change during Golden Week & summer vacation) 9:30am - 9:00pm (during Golden Week & summer vacation)		
Closed	First Monday of February and the following day		
Parking	Large buses (20 lots)		
Access	Approx. 15mins by car from the Island City exit, Fukuoka Urban Expressway		

Learn about Nature through Forest Activities like Tree Planting

MAP 2-A Uminonakamichi Seaside Park

Fukuoka City

The "Environmental Symbiosis Forest" is a long-term project where citizens volunteer in activities such as tree planting and undergrowth clearing to nurture a forest for future generations. Through forest-building efforts, hands-on nature programs, and nearby beach clean-ups, visitors can learn about the relationship between people and the natural environment.



Admission fee	Groups of 20 or more: ¥50 for elementary and junior high school students, ¥290 for high school students *Free entry for volunteers	Estimated tour duration	90 - 120 mins
Group size	ten - 100 people		

Location	18-25 Saitozaki, Higashi Ward, Fukuoka City TEL.092-603-1111 https://uminaka-park.jp		
Opening Hours	9:30am - 5:30pm (March - October), 9:30am - 5:00pm (November - February) *Pool opening hours: 9:00am - 6:30pm		
Closed	First Monday of February and the following day, and year-end/New Year holidays		
Parking	Large buses (43 lots)		
Access	Approx. 15 mins by car from the Kashiwaha exit of the Fukuoka Urban Expressway		



Interact with Animals!

This zoo offers the chance to observe animals like elephants, giraffes, and lions up close. Beyond what any field guide can convey, it is a perfect opportunity to engage all five senses—sight, sound, smell, and touch—to truly experience and learn about wildlife.

Learning Highlights

Learn about Life by Interacting with Animals

In addition to live animal exhibits, the museum features valuable materials such as taxidermy and skeletal specimens, offering a comprehensive learning experience about the animal world. Observing these creatures helps deepen understanding of wildlife conservation, environmental protection, and the broader natural world.

A Zoo Offering Up-Close Views of Animals in Their Natural Behaviors

MAP 福岡都心 MAP Fukuoka Zoo

Fukuoka City



Fukuoka Zoo exhibits 441 animals across 102 species (as of December 2021). Observing these lively animals allows visitors to appreciate the value of life. The zoo also houses rare species, providing opportunities to learn about wildlife conservation and environmental protection.



Admission fee	Groups of 30 or more: Free for elementary and junior high school students, ¥240 for high school students	Estimated tour duration	60 - 180 mins
Group size	No specification		

Location	1-1 Minamikoen, Chuo Ward, Fukuoka City TEL.092-531-1968 http://zoo.city.fukuoka.lg.jp/		
Opening Hours	9:00am - 5:00pm (last entry at 4:30pm)		
Closed	Mondays (or the following day if Monday is a public holiday), and year-end/New Year holidays. *Open on the last Monday of March.		
Parking	Large buses (9 lots) *Please inquire		
Access	Approx. 20 mins by car from the Tenjinjita exit of the Fukuoka Urban Expressway		

A Zoo that Promotes Animal Welfare

MAP 4-B Omuta City Zoo

Omuta City



Opened in 1941, this zoo has over 80 years of history. Guided by the concept of "promoting animal welfare," staff work closely with the animals to monitor their health and create environments suited to each individual, continually striving to enhance their quality of life.



Admission fee	Elementary and junior high school students: ¥100, high school students: ¥500 (¥100 on weekends and holidays)	Estimated tour duration	90 mins++
Group size	No specification *Group admission may be subjected to capacity restrictions. Please inquire.		

Location	163 Showa-machi, Omuta City TEL.0944-56-4526 https://omutacityzoo.org/		
Opening Hours	9:30am - 5:00pm. *Winter (December - February): 9:30am - 4:30pm. *Last entry: 1 hour before closing		
Closed	Second and fourth Mondays (if a Monday is a public holiday, closed the following Tuesday)		
Parking	Varies by season (reservations required)		
Access	Approx. 30 mins by car from Nankan IC on the Kyushu Expressway		



Watch Live Sports!

Fukuoka Prefecture is home to one professional baseball team and two professional soccer clubs in the J. League. There are plenty of opportunities to watch games featuring top domestic and international teams.

Learning Highlights

Stadium tours are just as exciting as watching a game.

With its massive domes and stadiums, Fukuoka offers numerous baseball and soccer events. Experience the thrill of the games not only by watching but also by visiting the actual facilities where the athletes train and compete.

Experience the Thrill of Baseball in a Huge Dome!



MIZUHO PayPay Dome FUKUOKA

Fukuoka City

Featuring one of the world's largest titanium roofs and distinctive light-brown exterior walls, this is Japan's largest baseball stadium built to international standards. Next to the dome is the multi-purpose entertainment complex "BOSS E-ZO FUKUOKA," making it a year-round entertainment ballpark.



Home to the Fukuoka SoftBank Hawks, this stadium features a retractable roof and hosts large-scale concerts, exhibitions, and other events beyond baseball.
©SoftBank HAWKS



Location 2-2-2 Jigyohama, Chuo Ward, Fukuoka City
TEL.092-844-1189 (Dome Main Office) <https://www.softbankhawks.co.jp/>
Opening Hours Depending on the match **Closed** None
Parking Large buses (10 lots) *Reservation required
Access Approx. 5 mins by car from the Momochi Exit of the Fukuoka Urban Expressway / Approx. 15 mins on foot from Tojinmachi Station

Admission fee	A standard admission fee applies for spectators	Estimated tour duration	Depends on the tour program
Group size	No specification		

Experience One of Japan's Leading Stadiums



BEST DENKI STADIUM

Fukuoka City

Located within the lush greenery of Higashi Hirao Park, this stadium is affectionately known to soccer fans as "BEST-STA." Its distinctive curved-roof stands accommodates around 21,600 people. It serves as the home field of J. League soccer team "Avispa Fukuoka," while also hosting rugby and American football events.



Admission fee	A standard admission fee applies for spectators	Estimated tour duration	Depends on the tour program
Group size	Please inquire		

Location 2-1-1 Higashihirao Park, Hakata Ward, Fukuoka City
TEL.092-612-7070 <http://www.midorimachi.jp>
Opening Hours 9:00am - 9:00pm **Closed** Year-end/New Year holidays
Parking Large buses (7 lots)
Access Approx. 20 mins by car from Dazaifu IC on the Kyushu Expressway
*Please inquire regarding tours etc.

A Stadium with Impressive Big Screens and Powerful Sound Systems



MIKUNI WORLD STADIUM KITAKYUSHU

Kitakyushu City

Opened in 2017, this stadium is home to J. League soccer team "Giravanz Kitakyushu." It features Japan's first "Zero Touch" stands, allowing spectators to watch from pitch level for a truly immersive experience. Equipped with a 7x10-meter video screen and a state-of-the-art sound system, every match is enjoyed in full dynamic detail. The stadium has a seating capacity of 15,000.



Photo: Kitakyushu City

Admission fee	Fees and admission vary depending on the purpose of use	Estimated tour duration	Depends on the tour program
Group size	Please inquire with facility manager or event organizer		

Location 3-9-33 Asano, Kokurakita Ward, Kitakyushu City
TEL.093-521-2020 <http://www.kitakyushu-stadium.jp>
Opening Hours 9:00am - 9:00pm
Closed Year-end/New Year holidays (December 29 - January 3)
Parking None
Access Approx. 5 mins by car from the north exit of Kokura Station on the Kitakyushu Urban Expressway



Catch a Performance!

Fukuoka City is a major city that also serves as a hub of culture and the arts. Numerous theaters showcase a wide range of live performances, from contemporary plays and musicals to traditional kabuki.

Learning Highlights

The theater's grand architecture is a work of art in itself

The architecture and carefully designed interiors of each theater are worth exploring. Hakataza Theater, in particular, showcases the theater's unique grandeur, with its sparkling chandelier-lit lobby and majestic horseshoe staircase, offering an atmosphere that only a theater can provide.

Admire the Luxurious Lobby and Elegant Seating

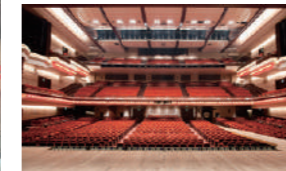


Hakataza Theater

Fukuoka City



The only theater in Kyushu dedicated exclusively to performing arts, featuring a hanamichi (stage walkway) and orchestra pit. It hosts a wide range of performances, from kabuki and musicals to Takarazuka, rakugo, and bunraku. Renovated in 2016, the theater now boasts state-of-the-art sound equipment, offering audiences a truly immersive stage experience.



Admission fee	Varies depending on the performance	Estimated tour duration	Depends on the tour program (For those without tickets, please visit the entrance during the performance period)
Group size	Full capacity: 1,500 seats		

Location 2-1 Shimokawabata-machi, Hakata Ward, Fukuoka City
TEL.092-263-5555 (Phone Reservation Center) <https://www.hakataza.co.jp>
Opening Hours Varies depending on the performance
Closed Varies depending on the performance
Parking None
Access Approx. 15 mins by car from the Tenjinmachi exit of the Fukuoka Urban Expressway

One of Kyushu's Largest Hubs for Yoshimoto Comedy and Entertainment



Yoshimoto Fukuoka Daiwa Securities Theater

Fukuoka City



Opened in July 2020, Yoshimoto's permanent theater on the seventh floor of Fukuoka's new landmark, BOSS E-ZO FUKUOKA, offers daily comedy shows featuring popular performers from Kyushu, Fukuoka, as well as Osaka and Tokyo.



Admission fee	Varies depending on the performance	Estimated tour duration	Varies depending on the performance
Group size	Number of seats: 501		

Location BOSS E-ZO FUKUOKA 7F, 2-2-6 Jigyohama, Chuo Ward, Fukuoka City
TEL.092-832-1122 <http://www.yoshimoto.co.jp/fukuokagekijyo/>
Opening Hours 10:00am - 6:00pm (Please inquire for reservation)
Closed Varies depending on the event situation
Parking No parking is available. Please use the MIZUHO PayPay Dome FUKUOKA parking lot.
Access Approx. 5 mins by car from the Nishikoen/Momochi ramp on the Fukuoka Urban Expressway (BOSS E-ZO FUKUOKA)



Visit a Museum!

With museums that focus on a single theme with innovative exhibits, Fukuoka offers engaging programs that make learning both fun and meaningful.

Learning Highlights

Promoting Interest in Diverse Cultures through Concise Exhibits

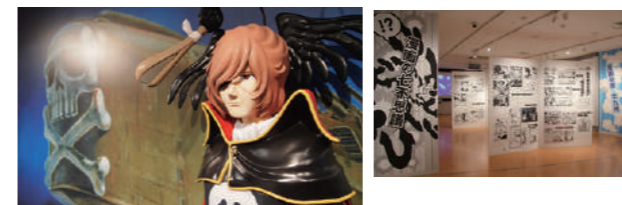
Explore Japan's globally renowned manga culture and highlights manga artists associated with Kitakyushu at the Kitakyushu Manga Museum. Gain in-depth insights into the Earth's past and future at the Kitakyushu Museum of Natural History & Human History.

Enjoy Learning about the Charm, History and Creative Process of Manga



Kitakyushu Manga Museum

Kitakyushu City



The Kitakyushu Manga Museum offers an engaging look at the charm, history, and creation process of manga. It also highlights artists and works associated with Kitakyushu. Freely explore a collection of around 70,000 manga, ranging from historical classics to recent hits, and even participate in manga assistant workshops.

Admission fee	Junior & senior high school students: ¥240 (¥190) Adults: ¥480 (¥380) Group rates (30+ people) in parentheses. Special exhibitions not included.	Estimated tour duration	30 - 60 mins Optional Manga Assistant Experience: 60 - 90 mins
Group size	Without a guide: up to around 200 people on weekdays. With a museum guide: 20-30 people per session. For hands-on assistant workshops: up to 20 people per session.		

Location 5F and 6F, Aruaru City, 2-14-5 Asano, Kokurakita Ward, Kitakyushu City
TEL.093-512-5077 <https://www.ktmq.jp>
Opening Hours 11:00am - 6:30pm *Admission hours
Closed Tuesdays (or the following day if Tuesday is a public holiday)
Parking None
Access Approx. 2 mins by car from the north exit of Kokura Station on the Kitakyushu Urban Expressway
Groups of 30 or more are requested to contact the museum in advance to help avoid congestion.

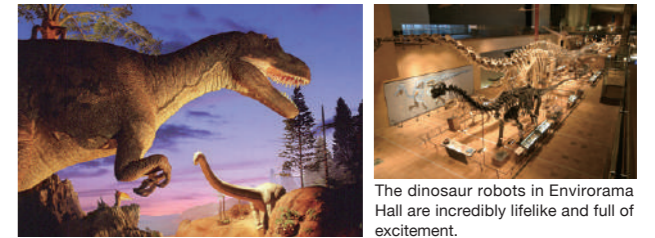
The Massive, Impressive Exhibits Are a Must-See



Kitakyushu Museum of Natural History & Human History

Kitakyushu City

One of the largest natural history and history museums in western Japan. The awe-inspiring Earth Mall showcases massive skeletal displays, while the Envirorama Hall brings ancient Kitakyushu to life with dinosaur robots and immersive light, sound, and wind effects. The History Zone features artifacts from Kitakyushu's pivotal role in Japan's modernization. Every corner is packed with fascinating exhibits.



The dinosaur robots in Envirorama Hall are incredibly lifelike and full of excitement.

Admission fee	Groups of 30 or more/ elementary and junior high school students ¥190, high school and university students ¥280, adults ¥480	Estimated tour duration	90 - 120 mins
Group size	No specification		

Location 2-4-1 Higashida, Yahatahigashi Ward, Kitakyushu City
TEL.093-681-1011 <https://www.kmnh.jp/>
Opening Hours 9:00am - 5:00pm (last entry at 4:30pm)
Closed Year-end/New Year holidays, pest control period (approximately one week in late June)
Parking Large buses (30 lots)
Access Approximately 3 mins by car from the Edamitsu Exit of the Kitakyushu Urban Expressway

Kitakyushu SDGs Discovery Learning Program



Kitakyushu School Trip website featuring personified characters from across the city (concept)

The Kitakyushu SDGs Discovery Learning Program is a paid initiative that allows students to engage in in-depth learning on the theme of the SDGs. In addition to popular field trip destinations focused on environmental education and industrial tourism, the program combines new site visit, workshops, seminars, and support from local university students, backed by local companies, organizations, and government. The program can be customized to fit the participating school's schedule and specific learning objectives.



Sample Program SDGs Initiatives by Leading Companies

Participants will learn in groups about Kitakyushu's rich industrial heritage, cutting-edge manufacturing technologies that continue to lead Japan's industry, the city's history of overcoming environmental challenges, and its initiatives toward the SDGs. Insights are then shared and explored through a collective seminar.

Program Details
Company Visit (factory tour, lecture, etc.) 60 - 120 mins + Group Sharing Seminar 60 mins

Program Highlights
The support center handles the coordination of complex factory visits and arrangements with companies. Visit sites are selected according to participant numbers and preferences, enabling participants to share and explore the initiatives of various companies during the group seminar.

Participating Companies
Nippon Steel Corporation Kyushu Works, TOTO Ltd., SHABONDAMA SOAP Co., Ltd., Takagi Co., Ltd., and others.
*Registered companies are being added continuously. Please check the website for details.

Group size 80 - 200 people
Fee ¥1,900 per person (tax included, transportation costs excluded)



TOTO Museum



Community Revitalization through Design Thinking and Collaborative City Walks with University Students

Learn from the pioneers of urban development in the Kokura and Kurosaki districts, and explore community building by walking the streets alongside university students.
Group size 40 - 60 people
Fee ¥6,300 per person (tax included, transportation costs excluded)



Exploring SDGs and Japan's Environmental Policies

Explore recycling and sustainability by visiting a recycling plant and attending lectures and briefing sessions at the Eco Town Center, alongside university students.
Group size 30 - 90 people
Fee ¥5,300 per person (tax included, transportation costs excluded)



REDEE @KITAKYUSHU INNOVATION CENTER

Explore cutting-edge content, reflect on SDGs, the use of AI, and related innovations.

Group size 30 - 150 people
Fee ¥3,800 per person (tax included, transportation costs excluded)

Kitakyushu Study Trip Support Center



Kitakyushu Study Trip Support Center
In collaboration with private organizations and universities, Kitakyushu City has established the Kitakyushu Study Trip Support Center to create a system that offers accessible, high-impact educational programs for school trips. The center aims to meet the diverse needs of schools and travel agencies by providing integrated support and coordinating programs that enhance learning outcomes.

- step 01** Apply for the Kitakyushu SDGs Discovery Learning Program through the application form on the Kitakyushu Study Trip Support Center website.
- step 02** Check availability and make arrangements through the Kitakyushu Study Trip Support Center.
*The Support Center can also coordinate multiple programs to accommodate group sizes or facility capacities.
- step 03** The Support Center issues a single invoice for participation fees, with payment made directly to the Support Center.
*All program-related payments are consolidated through the Support Center, allowing combined billing even when multiple programs are arranged.

Contact information
TEL : 093-533-2270
Email : kitakyushu_sdgs@bsec.jp

Opening hours 10:00 - 17:00 (excluding weekends, holidays, and year-end/New Year holidays)
Service overview Inquiries, arrangements, program development, and administrative management for the Kitakyushu SDGs Discovery Learning Program



School Trip Destinations

- Fukuoka Tower
- LaLaport FUKUOKA
- Budounoki
- Fukuya Mentaiko Factory HakuHaku
- Hakata Haneya Sohonke
- Yamaya Factory Terrace
- island eye

More Exciting School Trip Destinations Await in Fukuoka!

MAP Fukuoka Tower



Stretching 234 meters high, the top-floor observation deck offers a 360-degree panoramic view of Fukuoka. Enjoy refreshing daytime vistas, breathtaking sunsets and nightscapes, as well as seasonal illuminations that light up the tower throughout the year.

Location 2-3-26 Momochihama, Sawara Ward, Fukuoka City TEL.092-823-0234 <http://www.fukuokatawer.co.jp/>
Opening Hours 9:30am - 10:00pm (last entry at 9:30pm)
Closed The last Monday and Tuesday of June
Parking Large buses (13 lots)
Access Approx. 5 mins by car from the Momochi Exit of the Fukuoka Urban Expressway

MAP LaLaport FUKUOKA



Opened on April 25, 2022, this large-scale commercial complex brings together fashion, dining, and entertainment all in one place. Its landmark attraction is the "Life-Sized Gundam Statue." Other highlights include Kyushu's first-ever "KidZania Fukuoka" and "MIFA Football Park," among many other attractions.

Location 6-23-1 Naka, Hakata Ward, Fukuoka City TEL.092-707-9820
<https://mitsui-shopping-park.com/lalaport/fukuoka/>
Opening Hours Please inquire **Closed** Please inquire
Parking 3,050 lots
Access Approx. 7 mins by car from Tsukiguma JCT on the Fukuoka Urban Expressway

MAP Budounoki (Hokkori Farm)



At Hokkori Farm, visitors can enjoy hands-on lunch programs centered on the theme "Eating is Living," using non-standard vegetables to learn about food education. The farm offers various workshops, including sausage-making, agricultural experiences, food and agriculture events, allowing participants to "experience" the importance and joy of food.

Location 526-6 Utsura, Okagaki Town, Onga District TEL.0120-4898-06 (8:00am-8:00pm) 070-2615-0941 (mobile)
Closed Year-end/New Year holidays
Access By car: From Tenjin
By JR: Approx. 55 mins from Hakata Station, approx. 40 mins from Kokura Station

MAP Fukuya Mentaiko Factory HakuHaku



A mentaiko factory operated by Fukuya, a famous mentaiko (spicy cod roe) maker in Fukuoka. Visitors can enjoy factory tours where they can learn about the appeal of mentaiko in a fun and engaging way, as well as participate in the popular hands-on mentaiko making experience.

Location 2-14-28 Sharyo, Higashi Ward, Fukuoka City TEL.092-621-8989 <http://117hakuhaku.com>
Opening Hours 10:00am - 5:00pm (last entry at 4:30pm)
Closed Closed on Tuesdays (or the following day if Tuesday is a public holiday), year-end/New Year holidays, and occasional maintenance days, etc.
Parking Large buses (8 lots)
Access Approx. 10 mins by car from the Fukuoka Urban Expressway Airport Exit

MAP Hakata Haneya Sohonke



Near Fukuoka Airport, at Hakata Haneya Sohonke, visitors can create their own spicy cod roe (karashi mentaiko) under the guidance of an engaging instructor learning about local food culture while crafting their very own unique, delicious mentaiko—a rare opportunity in Japan.

Location 6-23-7 Tsukiguma, Hakata Ward, Fukuoka City TEL.092-576-9010 <http://hakatahaneya.com/>
Opening Hours 10:00am - 6:00pm
Closed Open year-round
Parking 15 large buses (approx. 30 cars)
Access Approx. 7 mins by car from Tsukiguma JCT on the Fukuoka Urban Expressway

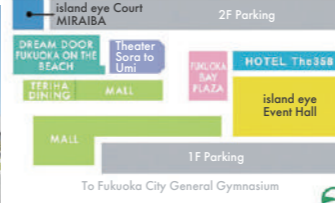
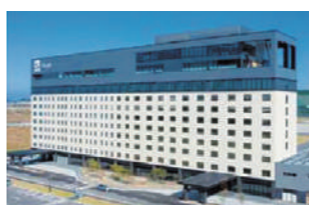
MAP Yamaya Factory Terrace



Operated by the famous mentaiko brand "Yamaya," this unique facility offers a full experience where visitors can learn about, taste, and shop for spicy cod roe. Divided into three themed zones, visitors can explore mentaiko from various perspectives and try making their own one-of-a-kind original mentaiko.

Location 1-12F Irodoridai, Sasaguri-machi, Kasuya District TEL.092-652-2208 <https://www.yamaya.com/factoryterrace/>
Opening Hours 10:00am - 5:00pm
Closed No fixed rest days
Parking Large buses (4 lots), cars (200 lots)
Access Approx. 6 mins by car from Fukuoka IC on the Kyushu Expressway

MAP Island Eye



Located on an artificial island in Fukuoka's Higashi Ward, Island Eye is a major complex at the heart of the new urban center Island City, opened in 2020. Conveniently connected to central Fukuoka via the urban expressway, it also sits along the route to Uminonakamichi Seaside Park and MARINE WORLD uminonakamichi.

- The facility is divided into four main zones:
1. Shopping and dining zone for group dining
 2. Accommodation zone featuring Hotel The 358
 3. Event hall zone offering hands-on learning experiences, such as taiko drum workshops
 4. Theater zone for live performances

The spacious complex includes parking for up to 15 chartered buses.

Location 6-6-6 Kashii Teriha, Higashi Ward, Fukuoka City TEL. 092-405-0025 (Management Office)

Other facilities within Island City

● **Vegetal Stadium**
The official name is Fukuoka City Central Wholesale Market – Fruit and Vegetable Market. Visitors can observe the market through a dedicated viewing corridor. Early-morning auction tours (reservation required), as well as events such as pesticide inspections and cooking classes, are also available.

● **Experimental Learning Facility GRIN GRIN**
Enjoy hands-on learning experiences focused on flowers and greenery at "GRIN GRIN" in Island City Central Park. Explore subtropical and tropical learning zones, as well as butterfly observation and chrysalis display areas.

● **Habataki Park (*Partially opened in 2024)**
Habataki Park, located in the northeastern part of Island City near the Wajiro tidal flats, has partially opened as a resting area for migratory birds. Visitors can observe wild birds and aquatic plants, learning about biodiversity and the importance of environmental conservation.

Experience Nature and Nurture the Heart



Farm Stay Fukuoka



Inquiries about Farm Stay Educational Trips

Asakura City ASAKURA GreenTourism

Address 1320 Amagi, Asakura City
 TEL 080-9141-4455
 Email info@asakura-gt.com
 Website https://asakura-gt.com
 Group size 150 people

Ashijiro District Farmstay Promotion Association

Address 587 Umami, Kama City
 TEL 0948-42-7452
 Email pr@city.kama.lg.jp
 Website http://f-nohaku.com/wp/plan/kamashi/
 Group size 60 people

Kurume-Minoh Green Tourism Association

Address 523-1 Asamori, Tanushimaru-machi, Kurume City
 TEL 090-7532-8208
 Email tanushimaru@mac.com
 Website https://www.tanushimaru.net/nouhaku
 Group size 35 people

Tachiarai Green Tourism

TEL 0942-23-2211 (Tachiarai Community Center)
 Website https://tachiarai-nohaku.com/
 Group size 30 people

Buzen Green Tourism Research Group

Address 955 Yoshiki, Buzen City
 TEL 0979-82-8087
 Email buzen.gt@gmail.com
 Group size 20 people

Fukuoka Experiential and Educational Tourism Association

Address 283 Takeno, Tanushimaru-machi, Kurume City
 TEL 090-9480-8241

Ukiha-machi Agricultural Tourism Promotion Association

Address 1-2 Nishikumanoue, Ukiha-machi, Ukiha City
 TEL 0943-77-3103
 Email info@isonosawa.com

Fukuoka Prefecture One Health/SDGs School Trip Model Course

*Unless otherwise noted, the times indicated represent travel time by bus (or car).

Model Course

MODEL COURSE	Course	Day 1	Day 2
1	Fukuoka area (Onojo, Umi, Chikuzen, Dazaifu, Munakata) Kitakyushu area (Okagaki and Kitakyushu) Course *One Health Learning Support *SDGs Learning Support *Peace Studies	[One Health Learning Guidance] Various locations → Manabino-yado Fukuoka (*lunch included) → One Health Forest and One Health Museum → CHIKUZENMACHI TACHIARAI PEACE MEMORIAL MUSEUM → Harazuru Onsen and Chikugogawa Onsen [overnight stay] (P.33)	Accommodation → Dazaifu Tenmangu Shrine → GLOBAL ARENE [Food Education Experience Farm] *lunch included Budounoki <Hokkori Farm> → TOTO Museum → Various locations
2	Kitakyushu area (Kitakyushu) and Chikuho area (Soeda and Tagawa) Fukuoka area (Fukuoka) Course *One Health Learning Support *Peace Studies	Various locations → Kitakyushu City Museum of Peace → Forest Adventure SOEDA (*lunch included) → Tagawa City Coal Mining Historical Museum → Fukuoka City [overnight stay]	[Backyard Tour] Accommodation → MARINE WORLD uminonakamichi → Shikanoshima Visitor Center → Independent Group Activities in Fukuoka City (lunch included) → Various locations
3	Fukuoka area (Chikuzen, Dazaifu, Fukuoka) Course *SDGs Learning Support *Peace Studies	Various locations → CHIKUZENMACHI TACHIARAI PEACE MEMORIAL MUSEUM → Dazaifu Tenmangu Shrine (*lunch included) Mentaiko Hands-On Experience → Hakata Haneya Sohonke or Fukuya Mentaiko Factory HakuHaku → Fukuoka City/Futsukaichi Onsen [overnight stay]	[Backyard Tour] Accommodation → MARINE WORLD uminonakamichi [Work Experience Program] → KidZania Fukuoka (*lunch included) → Various locations
4	Kitakyushu area (Kitakyushu) Course *SDGs Learning Support *Peace Studies	Various locations → Kitakyushu Museum of Natural History & Human History → SPACE LABO (KITAKYUSHU CITY SCIENCE MUSEUM) → (Lunch) → Kitakyushu Eco-Town Center → Kitakyushu City/Munakata City [overnight stay]	Accommodation → Kitakyushu City Museum of Peace → TOTO Museum → Mojiko Retro (Kanmon Strait Museum/ Kyushu Railway Museum) *lunch included → Various locations
5	Fukuoka area (Dazaifu) Chikugo area (Yanagawa and Omuta) Course *One Health Learning Support *Farm Stay Learning Experience	Various locations → Dazaifu Tenmangu Shrine → (Lunch) → Fukuoka Kodomo Junior College → Farm Stay Experience [overnight stay]	Accommodation → Yanagawa Canal Punt Tour → Kyushu Geibunkan Museum → (Lunch) → Omuta Coal Industry and Science Museum [World Heritage] → Miyano-hara Pit at the Miike Coal Mine, Former Miike Coal Mine Railroad Site → Various locations
6	Fukuoka area (Munakata) Kitakyushu area (Okagaki and Kitakyushu) Course *SDGs Learning Support *Peace Studies	Various locations → Munakata Taisha Shrine [Food Education Experience Farm] *lunch included → Budounoki <Hokkori Farm> → Kitakyushu City/Munakata City [overnight stay]	[World Heritage] Accommodation → Yahata Works Former Head Office → SPACE LABO (KITAKYUSHU CITY SCIENCE MUSEUM) → KITAKYUSHU GLOBAL GATEWAY → (Lunch) → Kitakyushu City Museum of Peace → Various locations
7	Fukuoka area (Dazaifu, Fukuoka, Shingu) Kitakyushu area (Kitakyushu) Course *SDGs Learning Support	Various locations → Dazaifu Tenmangu Shrine → Independent Group Activities in Fukuoka City (*including lunch) → Yoshimoto Fukuoka Daiwa Securities Theater or BOSS E-ZO FUKUOKA → Fukuoka City [overnight stay]	Accommodation → IKEA Fukuoka Shingu → (Lunch) → Kitakyushu City SDGs Program (Kitakyushu Eco-Town Center, TOTO Museum, JICA Kyushu, etc.) → Various locations
8	Fukuoka area (Dazaifu, Chikuzen, Asakura, Munakata) Course *SDGs Learning Support *Peace Studies	Various locations → Dazaifu Tenmangu Shrine → (Lunch) → CHIKUZENMACHI TACHIARAI PEACE MEMORIAL MUSEUM → Yamada Weir → Harazuru Onsen and Chikugogawa Onsen [overnight stay]	Accommodation → GLOBAL ARENE (Experience activities/language training programs *lunch included) → Various locations

List of Major Accommodation Facilities in Fukuoka Prefecture Accepting School Trips



	Hotel Name	Address	Contact	Capacity	No. of Rooms	Lunch Capacity	Bathroom Type	Bus Parking Capacity
Fukuoka Area	Hilton Fukuoka Sea Hawk	2-2-3 Jigyohama, Chuo Ward, Fukuoka City	092-844-7777	600 people	1052 rooms	500 people	All rooms	※
	Hotel New Otani Hakata	1-1-2 Watanabedori, Chuo Ward, Fukuoka City	092-714-1111	300 people	372 rooms	To confirm	All rooms	None
	Hotel Monterey Fukuoka	3-4-13 Watanabedori, Chuo Ward, Fukuoka City	092-734-7111	200 people	302 rooms	None	All rooms	None
	Best Western Plus Fukuoka Tenjin-minami	3-13-19 Haruyoshi, Chuo Ward, Fukuoka City	092-718-7700	160 people	236 rooms	None	All rooms	None
	Hotel Monterey La Soeur Fukuoka	2-8-27 Daimyo, Chuo Ward, Fukuoka City	092-726-7111	120 people	191 rooms	To confirm	All rooms	None
	Hakata Green Hotel Tenjin	2-9-11 Daimyo, Chuo Ward, Fukuoka City	092-722-3636	40 people	150 rooms	None	All rooms	None
	KKR HOTEL HAKATA	4-21-1 Yakuin, Chuo Ward, Fukuoka City	092-521-1361	100 people	130 rooms	None	All rooms	3 lots
	HOTEL ICHIRAKU	2-5-5 Kiyokawa, Chuo Ward, Fukuoka City	092-531-0561	100 people	147 rooms	None	Hot spring	3 lots
	Quintessa Hotel Fukuoka Tenjin Minami	1-18-3 Shirogane, Chuo Ward, Fukuoka City	092-707-1691	100 people	161 rooms	None	All rooms	None
	HILLTOP RESORT FUKUOKA	1-1-33 Terukuni, Chuo Ward, Fukuoka City	092-771-2131	100 people	46 rooms	100 people	All rooms Hot spring	2 lots
	Oriental Hotel Fukuoka Hakata Station	4-23 Hakata Eki Chuogai, Hakata Ward, Fukuoka City	092-461-2091	200 people	221 rooms	200 people	All rooms	※
	HAKATA EXCEL HOTEL TOKYU	4-6-7 Nakasu, Hakata Ward	092-262-0109	100 people	308 rooms	80 people	All rooms	※
	Hakata Green Hotel No.1	4-4 Hakata Eki Chuogai, Hakata Ward, Fukuoka City	092-451-4110	150 people	409 rooms	None	All rooms	None
	YAOJI HAKATA HOTEL	4-9-2 Hakata Ekimae, Hakata Ward, Fukuoka City	092-483-5111	60 people	207 rooms	40 people	All rooms Hot spring	3 lots
	Canal City Fukuoka Washington Hotel	1-2-20 Sumiyoshi, Hakata Ward, Fukuoka City	092-282-8800	50 people	423 rooms	None	All rooms	None
	Reisenkaku Hotel Ekimae	1-28-3 Hakata Ekimae, Hakata Ward, Fukuoka City	092-441-8601	50 people	206 rooms	None	All rooms	None
	Comfort Hotel Hakata	2-1-1 Hakata Ekimae, Hakata Ward, Fukuoka City	092-431-1211	348 people	242 rooms	None	All rooms	None
	The358 UMI	6-6-5 Kashii Teriha, Higashi Ward, Fukuoka City	092-665-1717	450 people	203 rooms	None	All rooms Hot spring	14 lots
	KYUKAMURA SHIKANOSHIMA	1803-1 Katsuma, Higashi Ward, Fukuoka City	092-603-6631	354 people	74 rooms	None	Hot spring	20 lots
	Fukuoka Recent Hotel	2-52-1 Hakozaki, Higashi Ward, Fukuoka City	092-641-7741	150 people	53 rooms	400 people	All rooms Hot spring	3 lots
The RESIDENTIAL SUITES FUKUOKA	1-3-70 Momochihama, Sawara Ward, Fukuoka City	092-846-8585	50 people	100 rooms	None	All rooms	2 lots	
Seaside Hotel TWINS MOMOCHI	1-7-4 Momochihama, Sawara Ward, Fukuoka City	092-822-5001	40 people	198 rooms	None	All rooms	None	
Daikanso	1-12-1 Yu-machi, Chikushino, Fukuoka City	092-922-3236	230 people	69 rooms	200 people	Hot spring	10 lots	
ROUTE-INN GRANTIA DAZAIFU	3-8-1 Rengaya, Dazaifu, Fukuoka City	050-5576-7903	100 people	129 rooms	80 people	Hot spring	To confirm	
GLOBAL ARENE	46-1 Yoshidome, Munakata City	0940-33-8400	960 people	95 rooms	To confirm	Hot spring	10+ lots available	
Mercure Fukuoka Munakata Resort & Spa	1303 Tano, Munakata City	0940-62-4111	700 people	290 rooms	None	All rooms	5~6 lots	
Kitakyushu Area	Hotel Tetora Kitakyushu	1-9-8 Kaji-machi, Kokurakita Ward, Kitakyushu City	093-531-3111	65 people	303 rooms	100 people	Hot spring	None
	RIHGA Royal Hotel Kokura	2-14-2 Asano, Kokurakita Ward, Kitakyushu City	093-531-1121	270 people	295 rooms	None	All rooms	6 lots
	ART HOTEL Kokura New Tagawa	3-46 Furusenba-machi, Kokurakita Ward, Kitakyushu City	093-521-7000	137 people	93 rooms	To confirm	All rooms	1 lots
	JR Kyushu Station Hotel Kokura	1-1-1 Asano, Kokurakita Ward, Kitakyushu City	093-521-5031	80 people	294 rooms	To confirm	All rooms	None
	SUNSKY HOTEL KOKURA	2-1 Shinko-cho, Kokurakita Ward, Kitakyushu City	093-521-0123	30 people	152 rooms	None	All rooms	2 lots
	Kokura Recent Hotel	1-1-17 Daimon, Kokurakita Ward, Kitakyushu City	093-581-5673	78 people	55 rooms	78 people	All rooms	1 lots
	Premier Hotel Mojiko	9-11 Minato-machi, Moji Ward, Kitakyushu City	093-321-1111	160 people	162 rooms	160 people	All rooms	※
	HOTEL CROWN PALAIS KITAKYUSHU	3-1 Higashimagari-machi, Yahatanishi Ward, Kitakyushu City	093-631-1111	130 people	220 rooms	120 people	All rooms	4 lots
	KAMENOI HOTEL GENKAINADA	2829 Arige, Wakamatsu Ward, Kitakyushu City	093-741-1335	187 people	50 rooms	100 people	Hot spring	4 lots
	Kokumin Shukusha Marine Terrace Ashiya	1588 Yamaga, Ashiya, Onga District	093-223-1081	125 people	30 rooms	None	Hot spring	3 lots
Chikugo Area	HOTEL NEWPLAZA KURUME	16-1 Mutsumon-machi, Kurume City	0942-33-0010	120 people	264 rooms	200 people	All rooms	5 lots
	Harazuru Onsen Harazuru Grand Sky Hotel	1820-1 Hakikugumiya, Asakura City	0946-62-1951	350 people	106 rooms	None	Hot spring	12 lots
	Taisenkaku	20 Hakishiwa, Asakura City	0946-62-1140	120 people	35 rooms	None	Hot spring	10 lots
	Hotel Hanageshiki	1097-1 Furukawa, Ukiha-machi, Ukiha City	0943-77-2110	80 people	35 rooms	50 people	Hot spring	5 lots
	Chikugogawa Onsen Kiyonoya	1099-3 Furukawa, Ukiha-machi, Ukiha City	0943-77-2188	40 people	14 rooms	80 people	Hot spring	3 lots
	KAMENOI HOTEL YANAGAWA	10-1 Yashiro-machi, Yanagawa City	0944-72-6295	143 people	40 rooms	120 people	Hot spring	3 lots
Chikuhō Area	Hakuryuso	16 Shin-machi, Yanagawa City	0944-73-1188	80 people	19 rooms	200 people	Hot spring	12 lots
	Nansuikaku	507 Wakita, Miyawaka City	0949-54-0123	130 people	29 rooms	To confirm	Hot spring	6 lots
	ROUTE-INN GRANTIA FUKUOKA MIYAWAKA-WAKITA ONSEN	778-1 Wakita, Miyawaka City	0949-54-0305	266 people	107 rooms	80 people	All rooms Hot spring	6 lots

※ Information on nearby parking facilities.

Please note that taxes for accommodation and hot spring may apply. Contact each facility for details.
 Separate baths available for men and women Every room has a bathroom
 Maximum occupancy per stay applies. Please contact the accommodation for details.

List of Major Lunch Venues for School Trips in Fukuoka Prefecture



	Hotel Name	Address	Contact	Lunch Capacity	Bus Parking Capacity
Fukuoka Area	Hilton Fukuoka Sea Hawk	2-2-3 Jigyohama, Chuo Ward, Fukuoka City	092-844-7777	500 people	※
	MLB café FUKUOKA	2-2-6 Jigyohama, Chuo Ward, Fukuoka City	092-687-0428	100 people	To reserve
	Hotel Monterey La Soeur Fukuoka	2-8-27 Daimyo, Chuo Ward, Fukuoka City	092-726-7111	To confirm	None
	Hakata Haneya Sohonke	6-23-7 Tsukiguma, Hakata Ward, Fukuoka City	092-576-9010	284 people	15 lots
	Hakata Fuyo	2-5-22 Toko, Hakata Ward, Fukuoka City	092-471-6111	500 people	20 lots
	SEN FUKU BAN RAI	HAKATA CROSS 2F, 1-4-72 Enokida, Hakata Ward, Fukuoka City	092-292-2933	240 people	None
	Oriental Hotel Fukuoka Hakata Station	4-23 Hakata Eki Chuogai, Hakata Ward, Fukuoka City	092-461-2091	200 people	※
	HAKATA EXCEL HOTEL TOKYU	4-6-7 Nakasu, Hakata, Fukuoka City	092-262-0109	80 people	※
	YAOJI HAKATA HOTEL	4-9-2 Hakata Ekimae, Hakata Ward, Fukuoka City	092-483-5111	40 people	3 lots
	KidZania Fukuoka	Inside LaLaport FUKUOKA, 6-23-1 Naka, Hakata Ward, Fukuoka City	092-778-2178	Reservations required (please inquire)	To reserve
	Canal City Hakata	1-2 Sumiyoshi, Hakata Ward, Fukuoka City	092-282-6380	Check with the respective store	To reserve
	Lita no Nouen	13-6 Chikkohon-machi, Hakata Ward, Fukuoka City Place Hakata Building A, 1F	092-282-0288	100 people	To inquire
	Renga Club	Fukuoka Tower 1F, 2-3-26 Momochihama, Sawara Ward, Fukuoka City	092-833-8133	120 people	※
	Sky Cafe & Dining Refuge	Fukuoka Tower Observation Floor 2F, 2-3-26 Momochihama, Sawara Ward, Fukuoka City	092-833-8133	70 people	※
	Fukuoka Recent Hotel	2-52-1 Hakozaki, Higashi Ward, Fukuoka City	092-641-7741	400 people	3 lots
	Shouseikan	4-7-37 Saifu, Dazaifu City	092-922-4068	500 people	※
	Nakagami Chaya	4-7-33 Saifu, Dazaifu City	092-922-4108	400 people	※
	ROUTE-INN GRANTIA DAZAIFU	3-8-1 Rengaya, Dazaifu, Fukuoka City	050-5576-7903	80 people	To confirm
	Daikanso	1-12-1 Yu-machi, Chikushino, Fukuoka City	092-922-3236	200 people	10 lots
	Yamaya Factory Terrace	1-1 Irodoridai, Sasaguri Town, Kasuya District	092-652-2208	48 people	4 lots
IKEA Fukuoka Shingu	2-9-1 Chuo Station, Shingu Town, Kasuya District	050-4560-0494	100 people	5 lots	
GLOBAL ARENE	46-1 Yoshidome, Munakata City	0940-33-8400	To confirm	10+ lots available	
Kitakyushu Area	Hotel Tetora Kitakyushu	1-9-8 Kaji-machi, Kokurakita Ward, Kitakyushu City	093-531-3111	100 people	None
	ART HOTEL Kokura New Tagawa	3-46 Furusenba-machi, Kokurakita Ward, Kitakyushu City	093-521-7000	To confirm	1 lots
	JR Kyushu Station Hotel Kokura	1-1-1 Asano, Kokurakita Ward, Kitakyushu City	093-521-5031	To confirm	None
	Kokura Recent Hotel	1-1-17 Daimon, Kokurakita Ward, Kitakyushu City	093-581-5673	78 people	1 lots
	Mitsui Club	7-1 Minato-machi, Moji Ward, Kitakyushu City	093-332-1000	120 people (70,30,20)	※
	Moji Port Retro Kaiyō Plaza	5-1 Minato-machi, Moji Ward, Kitakyushu City	093-332-3121	Total for eight stores: 326 people	※
	Premier Hotel Mojiko	9-11 Minato-machi, Moji Ward, Kitakyushu City	093-321-1111	160 people	※
	Mojiko Retro (Kanmon PAY)	1-3-3 Nishikaigan, Moji Ward, Kitakyushu City	093-331-6700	Check with the respective store	※
	HOTEL CROWN PALAIS KITAKYUSHU	3-1 Higashimagari-machi, Yahatanishi Ward, Kitakyushu City	093-631-1111	120 people	4 lots
	THE OUTLETS KITAKYUSHU	4-1-1 Higashida, Yahatahigashi Ward, Kitakyushu City	093-663-7251	Food court seating available for reservation (¥330 per seat)	By reservation
Chikugo Area	KAMENOI HOTEL GENKAINADA	2829 Arige, Wakamatsu Ward, Kitakyushu City	093-741-1335	100 people	4 lots
	Hibikino Campus Cafeteria	1-4 Hibikino, Wakamatsu Ward, Kitakyushu City	093-961-4430	100 people	To inquire
	Budounoki	183 Teno, Okagaki Town, Onga District	0120-4898-06	300 people	To inquire
	HOTEL NEWPLAZA KURUME	16-1 Mutsumon-machi, Kurume City	0942-33-0010	200 people	5 lots
	Hotel Hanageshiki	1097-1 Furukawa, Ukiha-machi, Ukiha City	0943-77-2110	50 people	5 lots
	Chikugogawa Onsen Kiyonoya	1099-3 Furukawa, Ukiha-machi, Ukiha City	0943-77-2188	80 people	3 lots
Chikuhō Area	Unagi Daito	18-9 Jōgu-machi, Yanagawa City	0944-72-7900	160 people	8 lots
	KAMENOI HOTEL YANAGAWA	10-1 Yashiro-machi, Yanagawa City	0944-72-6295	120 people	3 lots
	HAKURYUSO	16 Shin-machi, Yanagawa City	0944-73-1188	200 people	12 lots
	Nansuikaku	507 Wakita, Miyawaka City	0949-54-0123	To confirm	6 lots
	ROUTE-INN GRANTIA FUKUOKA MIYAWAKA-WAKITA ONSEN	778-1 Wakita, Miyawaka City	0949-54-0305	80 people	6 lots

※ Details on nearby parking facilities will be provided.